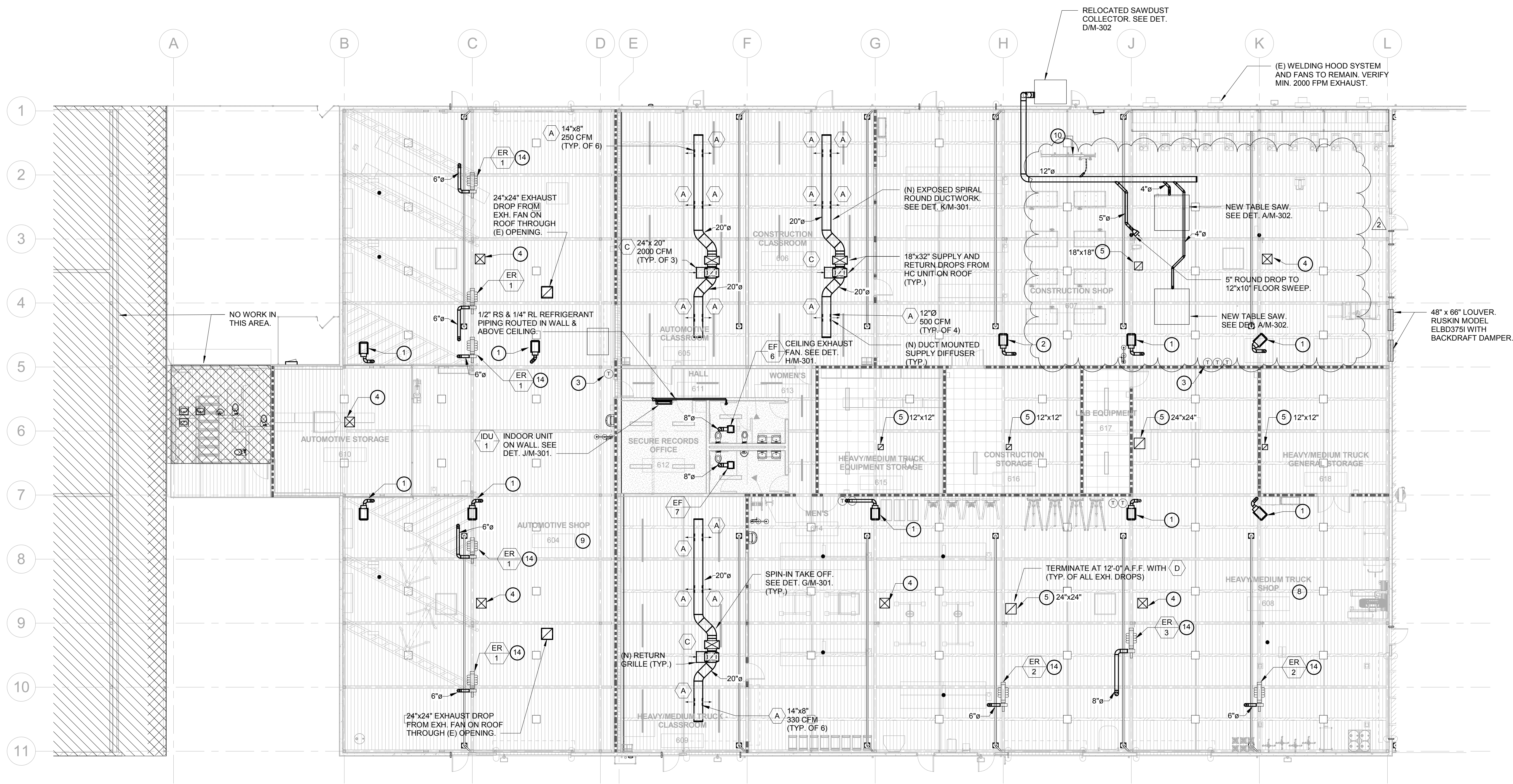


C:\Users\atschisel\Documents\17037 Madera CTE Modernization\_ARB\atschisel.rvt



**A Mechanical Floor Plan**  
3/32" = 1'-0"

### KEYNOTES:

- (E) UNIT HEATER SUSPENDED FROM CEILING AND FLUE THRU ROOF TO REMAIN.
- RELOCATED UNIT HEATER SUSPENDED FROM CEILING AND FLUE THRU ROOF. SEE DETAIL J.M-302.
- RELOCATED UNIT HEATER THERMOSTAT, HEIGHT AT 4'-0" AFF.
- 22"x22" SUPPLY DUCT THROUGH CLERESTORY FROM EVAPORATIVE COOLER ON ROOF. TERMINATE WITH DIVERTER @ 11" A.F.F. SEE DETAIL F.M-301.
- EXHAUST DUCT THROUGH CLERESTORY FROM EF ON ROOF.
- SPINDLE SANDER. SEE DET. C.M-302.
- MITRE BAND SAW. SEE DET. L.M-302.
- HEAVY TRUCK SHOP: AREA = 6320 FT<sup>2</sup> EXH. PROVIDED = 9500 CFM EXH RATE = 1.5 CFM/FT<sup>2</sup>
- AUTO SHOP: AREA = 5800 FT<sup>2</sup> EXH. PROVIDED = 8700 CFM EXH RATE = 1.5 CFM/FT<sup>2</sup>
- RELOCATED PANEL SAW. CONNECT TO DUST COLLECTION SYSTEM WITH 1-1/2" HOSE. SEE DETAIL L.M-302.
- EXHAUST DUCT UP THROUGH ROOF. SIZE NOTED ON PLAN. SEE SIMILAR DETAIL J.M-302.
- CAR-MON EXHAUST REEL. SEE DETAIL M.M-302.

**MDC**  
MECHANICAL DESIGN CONCEPTS, INC.  
7084 N. Maple Ave.  
Suite 101  
Fresno, CA 93720  
Tel: (559) 431-0101  
Fax: (559) 431-1362  
Job: 17037 Pk: 4-30-18

**PMSM**  
ARCHITECTS  
560 HIGUERA STREET  
SUITE C  
SAN LUIS OBISPO, CA 93401  
TEL (805) 476-0399 FAX (805) 594-1322

#### CONSULTANTS

**CIVIL ENGINEER**  
BLAIR, CHURCH & FLYNN  
451 Clovis Avenue, Suite 200  
Clovis, CA 93612  
TEL (559) 326-1400

**COST ESTIMATOR**  
LELAND SAYLOR ASSOCIATES  
101 Montgomery Street, Suite 800  
San Francisco, CA 94104  
TEL (415) 291-3200

**STRUCTURAL ENGINEER**  
BIGGS CARDOSA ASSOCIATES INC.  
2250 N. Palm Avenue, Suite 211  
Fresno, CA 93704  
TEL (805) 499-8686

**MECHANICAL ENGINEER**  
MECHANICAL DESIGN CONCEPTS, INC.  
1080 W. Sierra, Suite 101  
Fresno, CA 93711  
TEL (559) 437-0376

**ELECTRICAL ENGINEER**  
THOMA ENGINEERING  
3802 Empire Street, Suite C  
San Luis Obispo, CA 93401  
TEL (805) 543-3850

**FIRE PROTECTION ENGINEER**  
COLLINGS & ASSOCIATES, LLC  
260 Maple Court, Suite 241  
Ventura, CA 93003  
TEL (805) 658-0003

#### ARCHITECT STAMP



#### CONSULTANT STAMP



#### AGENCY APPROVAL

IDENTIFICATION STAMP  
DIV. OF THE STATE ARCHITECT

FILE NO. 20-H3  
APPL. 02-116098  
AC FL SS  
DATE

#### REVISIONS

#	NO.	DATE	DESCRIPTION
1	2	3/25/19	Addendum 2
2			
3			
4			
5			
6			
7			
8			
9			
10			
11			

THE ARCHITECT DOES NOT REPRESENT THAT THESE PLANS OR THE SPECIFICATIONS ARE SUITABLE FOR ANY SITE OTHER THAN THE ONE FOR WHICH THEY WERE SPECIFICALLY PREPARED. THE ARCHITECT DISCLAIMS RESPONSIBILITY FOR THESE PLANS AND SPECIFICATIONS IF THEY ARE USED IN WHOLE OR IN PART AT ANY OTHER SITE.

PROJECT OWNER &  
Madera Unified School District  
1902 Howard Road  
Madera, CA 93637

**MADERA CTE  
MODERNIZATION**  
200 SOUTH L STREET  
MADERA, CA 93637

#### SHEET TITLE

**MECHANICAL  
FLOOR PLAN**

#### DRAWN BY: ARB

JOB NUMBER: 16052.01

#### SHEET NO.

**M-201**

DATE: MARCH 12, 2018

PROGRESS TOWARD DSA BACK CHECK

3/26/2019 2:12:14 PM