



Madera Unified School District

1902 Howard Road, Madera, CA 93637
559.675.4500
Fax: 559.675.1186
www.madera.k12.ca.us

March 27, 2024

Addendum No.1 Bid No.031524-Asphalt Resurface & Repairs at Multiple Sites

NOTICE TO ALL VENDORS:

This addendum is attached to and made a part of the above-entitled specifications for Madera Unified School District for Bid No. 031524-Asphalt Resurface & Repairs at Multiple Sites, with a Bid Turn in date of April 2, 2024 @ 10:00:00 am

All changes and/or clarifications will appear in bold type and deletions will be struck out within a sentence.

Clarification/Questions:

Job Walk Notes-applies to all sites

- **A one-foot patch back around islands curbs**
- **Discard landscaping**
- **District is responsible for irrigation**
- **A line-item cost for 1-5 B1730 traffic-rated Christy box with lid**
- **Seal Coat all new improvements (Ace Seal)**
- **Soil compaction done by the District**

See attached updated Specification and added Alt. Bid .1

Signature: _____

Date: _____

Superintendent

Lucy Salazar, President

Ruben Mendoza, Clerk
Nadeem Ahmad

Israel Cortes
Gladys A. Diebert

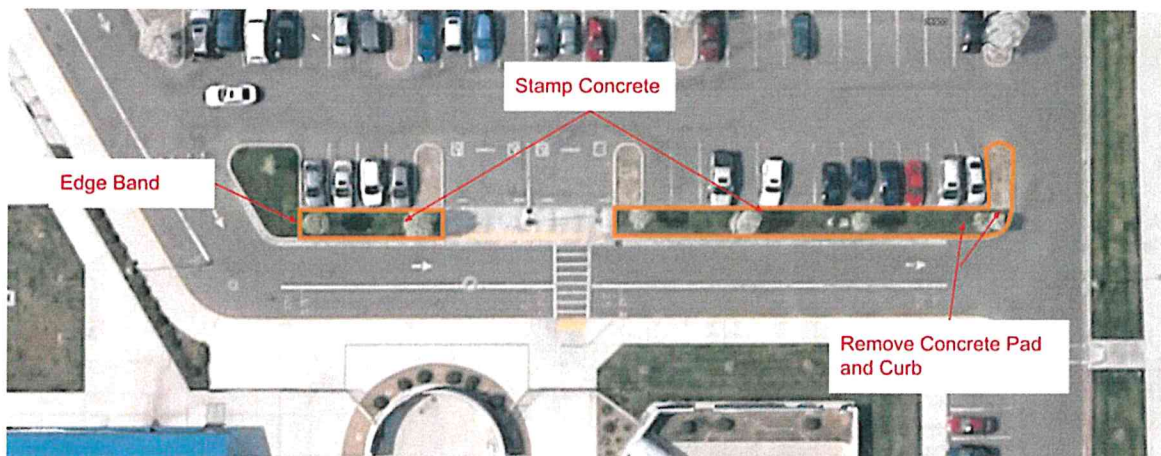
Joetta Fleak
Ray G. Seibert

Alternate Bid

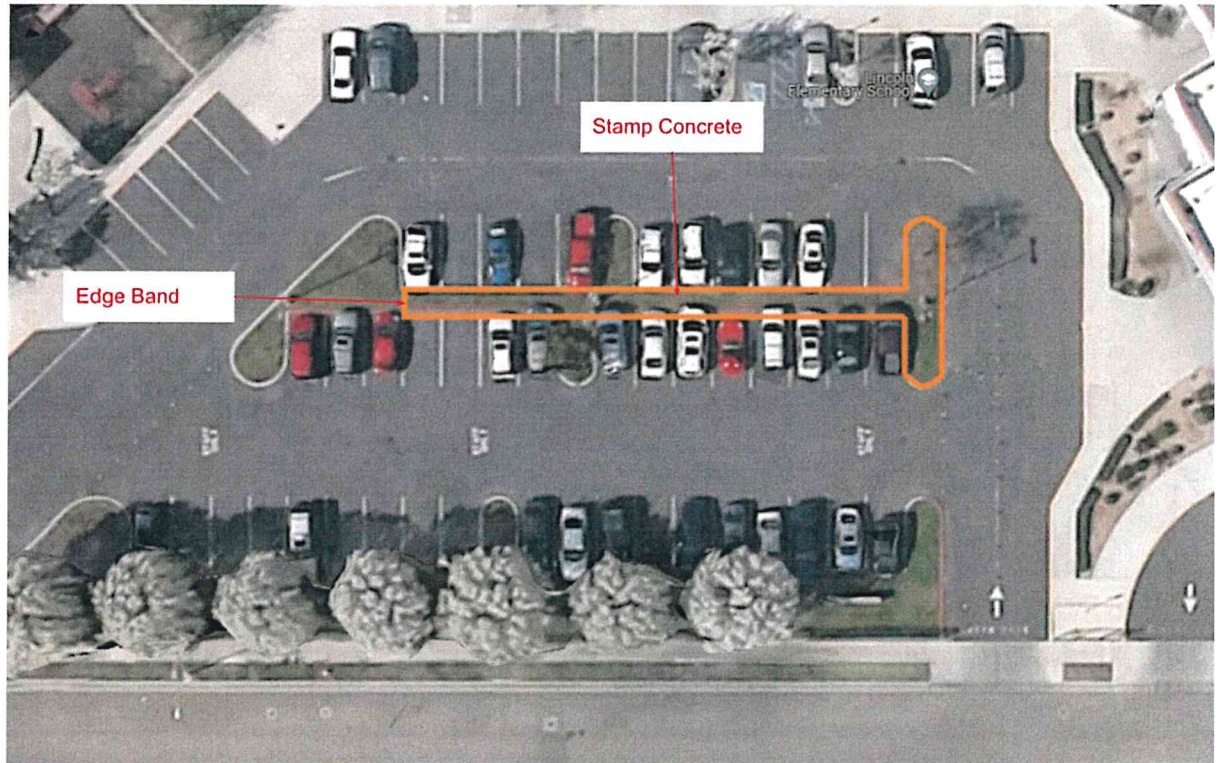
- Brick stamp concrete at Lincoln and Chavez.
- Remove 8" of existing soil and grass and pour back with 4" concrete over 4" New Aggregate Base
- Brick running bond pattern

Chavez

- Remove concrete pad (approximately 5'x9')
- Demo existing curb at the north end (approximately 8')
- Demo and re-pour NE curb (approximately 10' 3"). Dowel in with #4 rebar (1 per connection)
- Edge band south end of stamped concrete



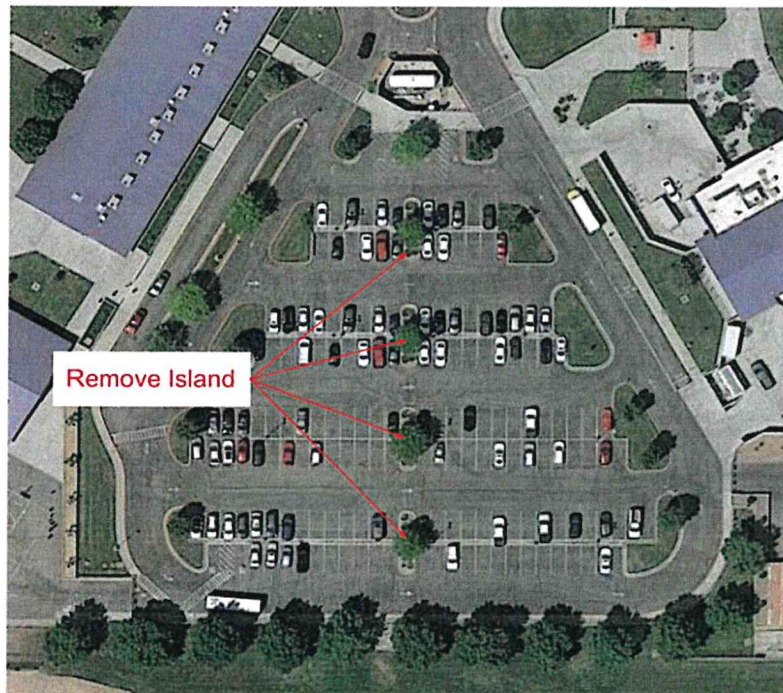
Lincoln



- Edge band south end of stamped concrete

Desmond

- Remove four islands and Replace with 3/6 Parking lot specifications
- Installation of 3" hot asphalt over 6" New Aggregate Base
- Add valley gutters (match existing)
- Seal and restripe
- A one-foot patch back around islands curbs (four)
- Install two valley gutters 6" thick with #4 rebar dowels (3 per connection)
- Strip back access aisle north island



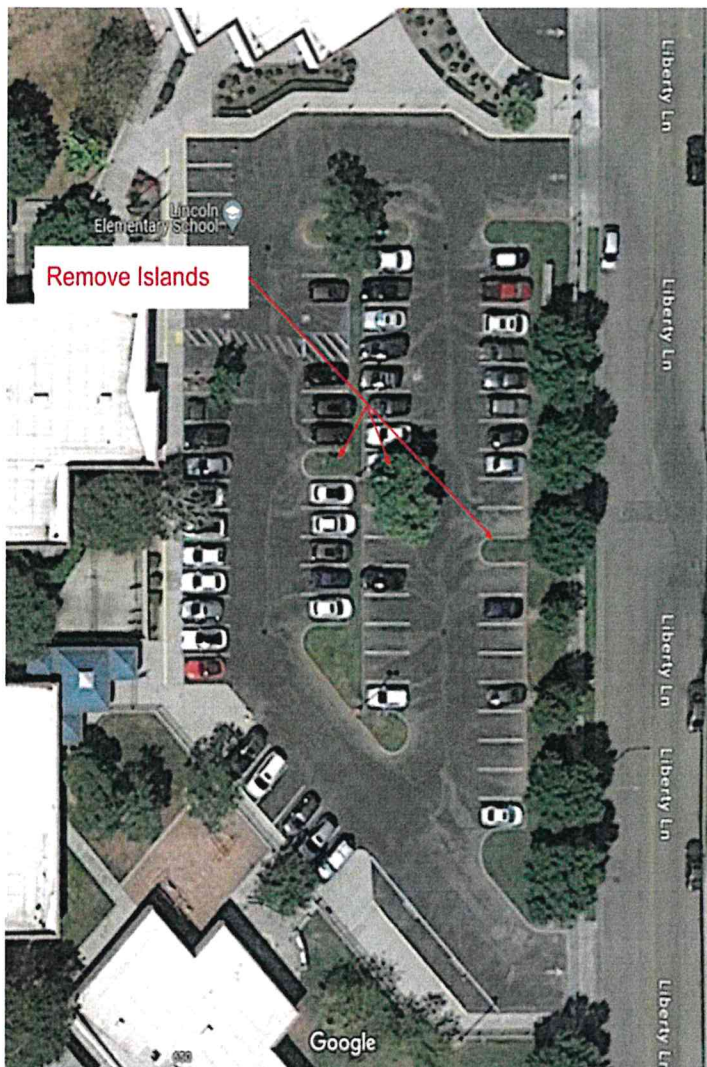
Pershing

- Remove four islands and Replace with 3/6 Parking lot specifications
- Installation of 3" hot asphalt over 6" New Aggregate Base
- Add valley gutters (match existing)
- Add curbing (match existing)
- Seal and restripe
- Remove one tree and stump.
- A one-foot patch back around islands curbs (four)
- Install two valley gutters 6" thick with #4 rebar dowels (3 per connection)
- Match drain inlet flair at two locations
- Saw cut NW island curb
- Demo and re-pour SW island curb (approximately 9'). Dowel in with #4 rebar (1 per connection)
- Remove tree SW island



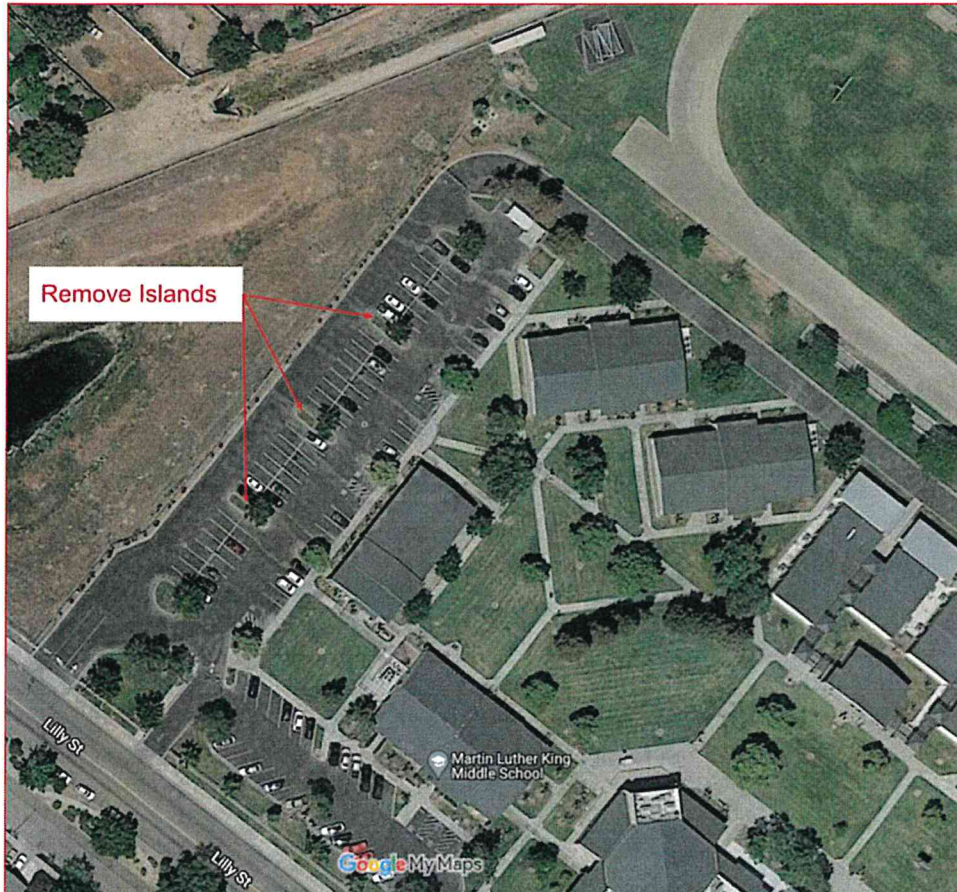
Lincoln

- Remove islands and Replace with 3/6 Parking lot specifications
- Installation of 3" hot asphalt over 6" New Aggregate Base
- Add curbing (match existing)
- Seal and restripe
- **A one-foot patch back around islands curbs (three)**
- **Demo and re-pour curb at three locations (approximately 8' per location).**
Dowel in with #4 rebar (1 per connection)
- **Remove tree**
- **Replace irrigation box with a B1730 traffic-rated Christy box with lid**



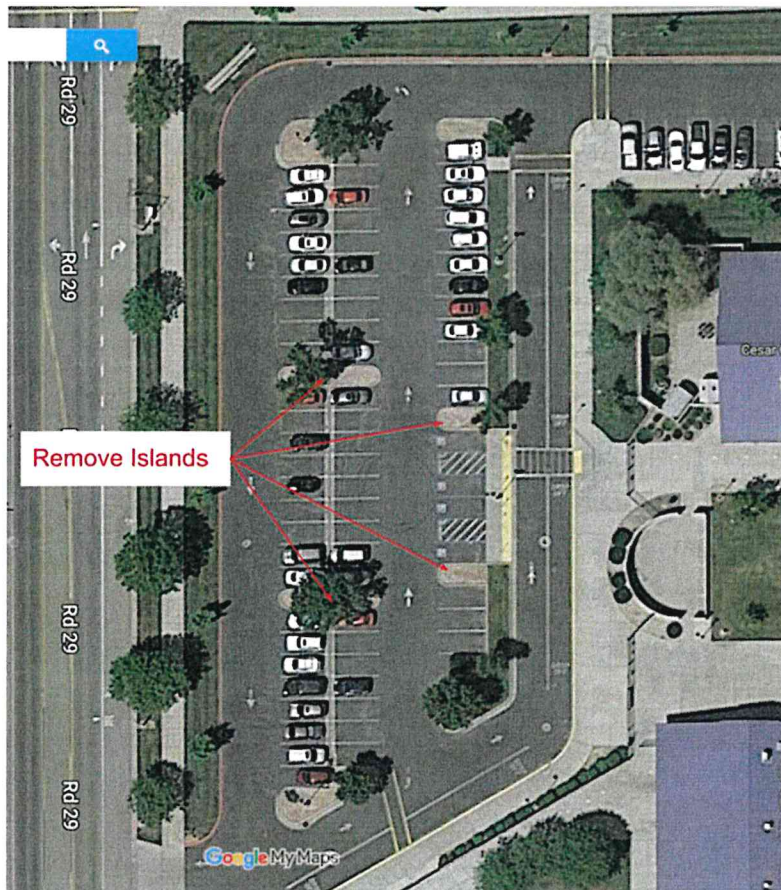
MLK

- Remove three islands and Replace with 3/6 Parking lot specifications
- Installation of 3" hot asphalt over 6" New Aggregate Base
- ~~Add valley gutters (match existing)~~ **No valley gutters**
- Seal and restripe



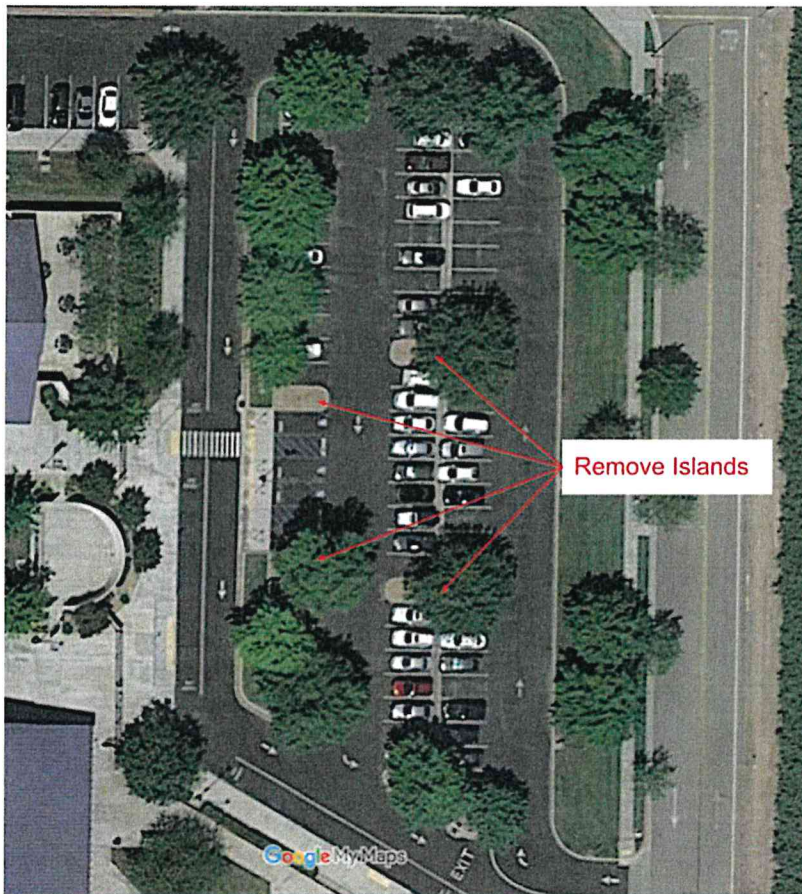
Chavez

- Remove four islands and Replace with 3/6 Parking lot specifications
- Installation of 3" hot asphalt over 6" New Aggregate Base
- Add valley gutters (match existing)
- Add curbing (match existing)
- Seal and restripe
- **A one-foot patch back around islands curbs (four)**
- **Install two valley gutters 6" thick with #4 rebar dowels (3 per connection)**
- **Match drain inlet flair at two locations**
- **Demo and re-pour NE curb (approximately 8'). Dowel in with #4 rebar (1 per connection)**
- **Demo and re-pour SE curb (approximately 8'). Dowel in with #4 rebar (1 per connection)**



Parkwood

- Remove four islands and Replace with 3/6 Parking lot specifications
- Installation of 3" hot asphalt over 6" New Aggregate Base
- Add valley gutters (match existing)
- Add curbing (match existing)
- Seal and restripe
- **A one-foot patch back around islands curbs (four)**
- **Install two valley gutters 6" thick with #4 rebar dowels (3 per connection)**
- **Match drain inlet flair at two locations**
- **Demo and re-pour NW curb (approximately 6'). Dowel in with #4 rebar (1 per connection)**
- **Demo and re-pour SW curb (approximately 8'). Dowel in with #4 rebar (1 per connection)**



Adams

Section A

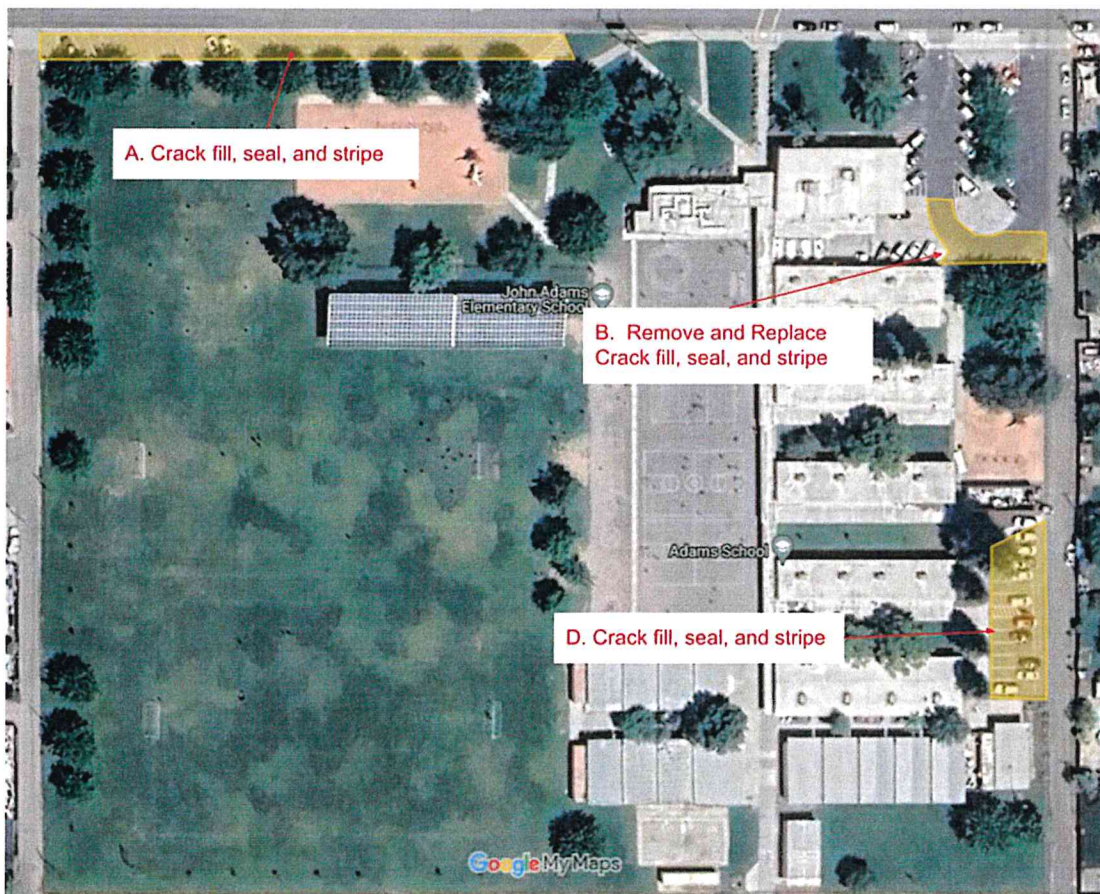
- Crack fill, seal, and stripe
- **Paint red and yellow curb**

Section B

- Remove and Replace with 4/6 Bus lane specifications
- Installation of 2" and 2" inch lifts of hot asphalt over 6" New Aggregate Base
- Install concrete mow strip 12" wide by 56' feet length by 6" depth. Control joints every 10 feet.
- Seal and strip
- **Saw cut and remove 4'x4' concrete pad and pour back with asphalt (4/6)**
- **District responsible for removing fence**

Section D

- Crack fill, seal, and stripe
- **Do not strip back parking stalls**
- **Stripe access aisle from the gate and around the electrical pole**
- **Stripe back four-inch wide line approximately 122 feet with No Parking every 20'**



Washington

- Crack fill, seal, and stripe
- 1' foot patch back repair (~~4'x5'~~) (1'x17')

