

Addendum No. 03

May 8, 2024



Universal Transitional Kindergarten Lincoln Elementary School

OWNER: MADERA UNIFIED SCHOOL DISTRICT
1902 HOWARD ROAD
MADERA, CA 93637

PREPARED BY: PBK Architects, Inc.
7790 N. Palm Avenue
Fresno, California 93711

PBK PROJECT NO.: 220486
DSA FILE NO.: 20-30
DSA APPLICATION NO.: 02-121587

NOTICE TO BIDDERS

- A. Receipt of this Addendum shall be acknowledged on the Proposal Form.
 - B. This Addendum forms part of the Contract Documents for the above referenced project and shall be incorporated integrally therewith.
 - C. Each proposer shall make necessary adjustments and submit their proposal with full knowledge of all modifications, clarifications, and supplemental data included therein. Where provisions of the following supplemental data differ from those of the original Contract Documents, this Addendum shall govern.
-

DRAWINGS:

3-01 CS2.1 – DEMOLITION PLAN, revise as follows:

- a. Additional concrete removal and revisions have been clouded with delta 2. Remove and replace with attached drawing.

3-02 CS3.1 – SITE PLAN, revise as follows:

- a. Extension of play equipment areas; revisions have been clouded with delta 2. Remove and replace with attached drawing.
- b. Extension of sidewalks and addition of a pedestrian gate. Revisions have been clouded with delta 2. Remove and replace with attached drawing.

3-03 CS4.1 – GRADING AND DRAINAGE PLAN, revise as follows:

- a. Revised grading within play equipment areas and sidewalks. Revisions have been clouded with delta 2. Remove and replace with attached drawing.

3-04 L1.1 – PLANTING PLAN, revise as follows:

- a. Relocate large tree at revised area; Revisions have been clouded with delta 2. Remove and replace with attached drawing.

3-05 L1.2 – PLANTING DETAILS, revise as follows:

- a. Added mulch detail E, and revisions have been clouded with delta 2. Remove and replace with attached drawing.

Universal Transitional Kindergarten Lincoln Elementary School

- b. Added turf repair detail F, and revisions have been clouded with delta 2. Remove and replace with attached drawing.

3-06 IR1.1 – IRRIGATION PLAN, revise as follows:

- a. Modified irrigation line at revised area and revisions have been clouded with delta 2. Remove and replace with attached drawing.
- b. Added keynotes F and G; revisions have been clouded with delta 2. Remove and replace with attached drawing.

CLARIFICATIONS:

3-07 AT.1 – COVER SHEET, revise as follows:

- c. Allowable area calculation changed to show correct square footage for new buildings and for fire safety codes. Revisions have been clouded.
- d. Scope of work change for additional portable buildings to the project. Revisions have been clouded.

3-08 AT.2 – NOTES, revise as follows:

- a. Removed text for description of California code to be added to plans.
- b. Added note “24” to general notes for durable or preservative treated woods sills for portables.

3-09 AS.1 – OVERALL SITE PLAN, revise as follows:

- a. Change of the frontage area increase around new modular building with assumed property lines & dimensions for the fire separation distance.
- b. Removed the safety dispersal area from the plan with lighting.
- c. Assigned building identifiers for portable buildings & following the DSA IR-16 code sections for portables.

3-10 AS.2.1 – ENLARGED PARTIAL DEMO PLAN, omit sheet from plan.

3-11 AS.3 – ENLARGED PARTIAL SITE PLAN, revise as follows:

- a. Changed the direction of the swing gate to the path of egress.

3-12 AS.3.1 – ENLARGED PARTIAL SITE PLAN, revise as follows:

- a. Details of portables foundation plan, sill plate, ramps were added to the plan.
- b. Placed spot levels for sill plate and finish floor height to portables per the DSA IR – 16 compliance sections.
- c. Added keynote of welding exceptions for relocatable ramps.
- d. Added general note from DSA IR – 16 code section to plan.

3-13 AS.4 – FLOOR PLAN, revise as follows:

- a. Fire sprinkler room label to be removed from sheet.
- b. Added keynote of plumbing wall cavities to be filled with non-combustible insulation.

Addendum No. 03

May 8, 2024



Universal Transitional Kindergarten Lincoln Elementary School

3-14 DT.2 – DETAILS, revise as follows:

- a. Detail number 2 added note to detail for metal blocking detail.
- b. Changed metal blocking graphic to wood blocking graphic.
- c. Added text note for minimum penetration depth for wood screws.
- d. Details number 3 added note to detail for metal blocking detail.
- e. Change text of wood blocking and graphic.
- f. Added detail number 10 closure panel.

3-15 ES.1 – ELECTRICAL SITE PLAN, revise as follows:

- a. Removal of safety dispersal area with lighting on sheet.
- b. Revised detail "Surface Mounted FACP" on sheet.

3-16 FA0.1 – F.A. SHEET INDEX, LEGEND & NOTES, revise as follows:

- a. Change of verbiage of fire alarm control panel under device schedule.

3-17 BUILDING SERIES DSA PC 04-104244, revise as follows:

- a. Crossed out older DSA stamps and changed the title of previous project to current project name.

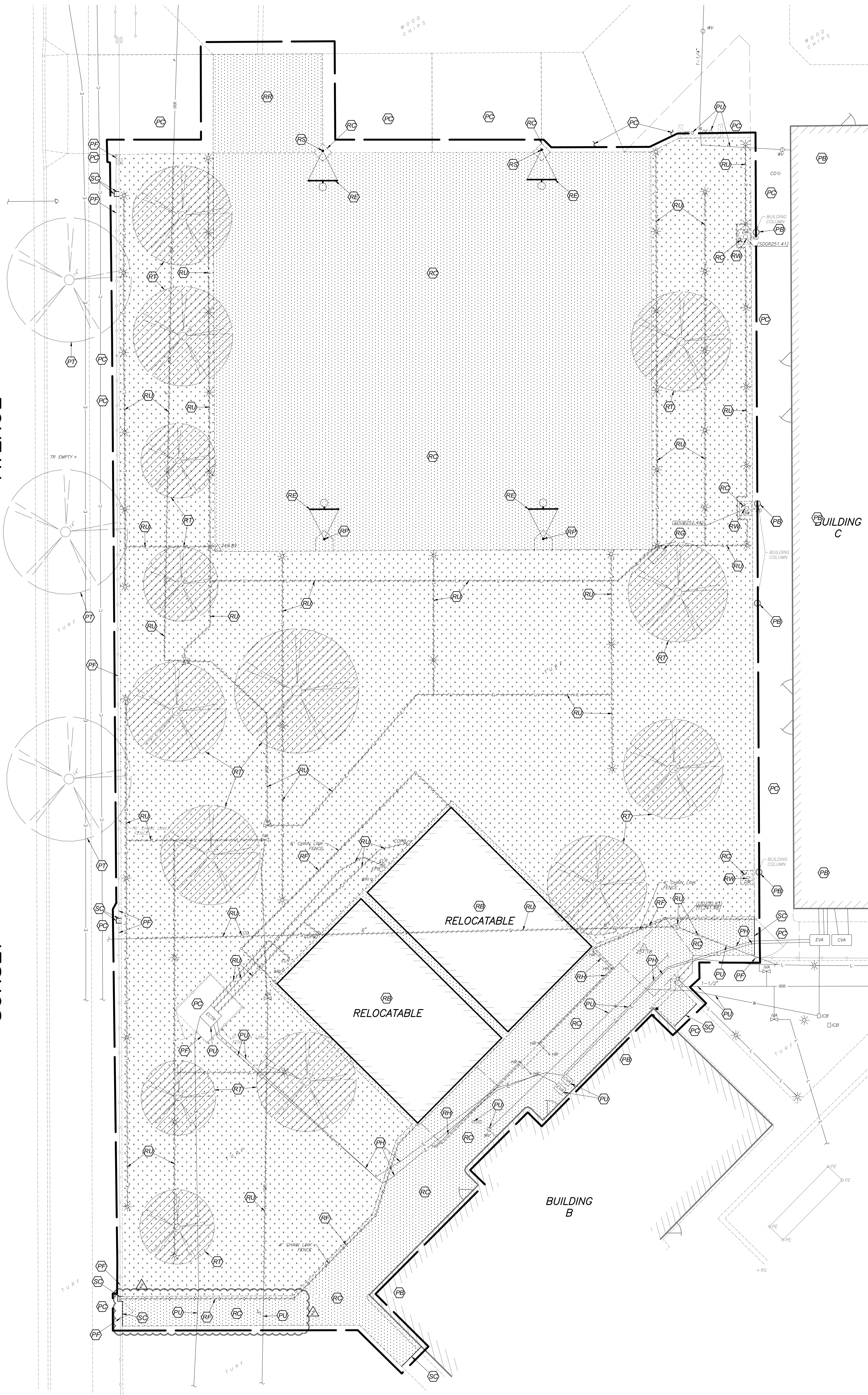
END OF ADDENDUM NO. 3

NAME OF ARCHITECT, Architect

Drawing: P:\223-0165\Site\production\mwp\223165_DEM.dwg, CS2 - BCF.db
Plot by garibola May 08, 2024 - 10:02am

AVENUE

SUNSET

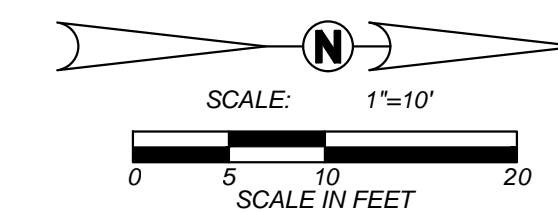


DEMOLITION LEGEND:

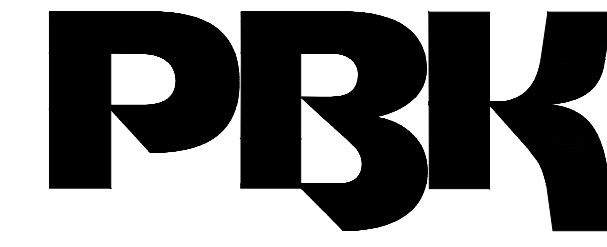
- REMOVE EXISTING IMPROVEMENTS AS NECESSARY TO CONSTRUCT NEW IMPROVEMENTS SHOWN ON THESE PLANS. UNLESS OTHERWISE NOTED ON THE PLAN, THE REMOVAL OF IMPROVEMENTS MUST BE COORDINATED WITH ALL PLAN SHEETS. CONTRACTOR MUST ALSO COORDINATE REMOVAL OF IMPROVEMENTS WITH UTILITY AGENCIES. PROTECT ALL IMPROVEMENTS NOT DESIGNATED FOR REMOVAL. SEE NOTE 1
- LIMITS OF VEGETATION REMOVAL. 4" MINIMUM DEPTH
- LIMITS OF CONCRETE IMPROVEMENT REMOVAL
- PROTECT BUILDING TO REMAIN
- PROTECT CONCRETE IMPROVEMENTS TO REMAIN
- PROTECT FENCE TO REMAIN
- POTHOLE AND LOCATE EXISTING ELECTRICAL FACILITIES PRIOR TO ANY EXCAVATION OR TRENCHING. PROVIDE DOCUMENTATION OF HORIZONTAL AND VERTICAL LOCATIONS TO ENGINEER BEFORE PROCEEDING.
- PROTECT TREE TO REMAIN
- PROTECT UTILITY TO REMAIN
- REMOVE AND LAWFULLY DISPOSE OF BUILDING
- REMOVE AND SALVAGE ATHLETIC EQUIPMENT TO OWNER
- REMOVE AND LAWFULLY DISPOSE OF CONCRETE IMPROVEMENTS
- REMOVE AND LAWFULLY DISPOSE OF CHAIN LINK FENCE FABRIC, POSTS AND FOOTINGS
- REMOVE AND LAWFULLY DISPOSE OF BENCH
- REMOVE AND LAWFULLY DISPOSE OF HAND RAILS
- REMOVE POST AND FOOTING COMPLETELY, BACKFILL VOID PER SPECIFICATIONS
- REMOVE AND REPLACE CONCRETE, INCLUDING PAINTING
- REMOVE CONCRETE FOOTING TO A DEPTH OF 12" BELOW GRADE AND CUT OFF GOAL POST. FILL REMAINING POST BELOW WITH 2-SACK SLURRY TO TOP OF PIPE
- REMOVE AND LAWFULLY DISPOSE OF TREE AND ROOTS
- REMOVE AND LAWFULLY DISPOSE OF UTILITY
- REMOVE DRAINWELL AND INLET BOX COMPLETELY, BACKFILL VOID PER SPECIFICATION
- SAWCUT
- REMOVE TREE
- LIMIT OF CHAIN LINK FENCE REMOVAL
- LIMIT OF IRRIGATION MAIN LINE REMOVAL
- LIMIT OF IRRIGATION LATERAL LINE REMOVAL
- LIMIT OF COMMUNICATION LINE REMOVAL
- LIMIT OF UNDERGROUND ELECTRICAL LINE REMOVAL

GENERAL DEMOLITION NOTES:

- THE "LIMIT OF DEMOLITION" SHOWN IS APPROXIMATE AND IS GENERALLY CONSIDERED TO BE THE MINIMUM REMOVAL REQUIREMENTS. CONTRACTOR MUST COORDINATE AS NOTED IN THE LEGEND.
- CONTRACTOR SHALL LEGALLY DISPOSE OF ALL DEMOLISHED MATERIALS OFF SITE.
- CONTRACTOR SHALL PROTECT ALL EXISTING UTILITY IMPROVEMENTS NOT SPECIFICALLY DESIGNATED FOR REMOVAL.
- THE ON-SITE UNDERGROUND UTILITIES SHOWN ON THIS SHEET ARE AT APPROXIMATE LOCATIONS. THE EXTENT, LOCATIONS AND SIZES ARE UNKNOWN. THE CONTRACTOR SHALL POTHOLE TO LOCATE AND VERIFY THE UNDERGROUND UTILITY LINES PRIOR TO REMOVAL.
- CONTRACTOR TO PROTECT AND PRESERVE IN PLACE ANY FOUND SURVEY MONUMENTS. ANY MONUMENTS DISTURBED SHALL BE RESET BY A CALIFORNIA LICENSED SURVEYOR AND THE APPROPRIATE PAPERWORK FILED WITH THE CITY OR COUNTY, AT CONTRACTOR'S EXPENSE.
- ALL HAZARDOUS MATERIALS ENCOUNTERED DURING SITE DEMOLITION SHALL BE REMEDIATED AND DISPOSED OF PER STATE AND EPA REQUIREMENTS.
- CONTRACTOR SHALL CONTACT AND COORDINATE WITH ALL UTILITY AGENCIES PRIOR TO THE START OF ANY DEMOLITION OR CONSTRUCTION.
- ANY EXISTING UTILITIES AND/OR IMPROVEMENTS WHICH ARE TO REMAIN, THAT BECOME DAMAGED DURING CONSTRUCTION SHALL BE COMPLETELY RESTORED TO THE SATISFACTION OF THE OWNER AND AGENCY HAVING AUTHORITY, AT THE CONTRACTOR'S SOLE EXPENSE.
- REMOVE EXISTING IMPROVEMENTS AS NECESSARY TO CONSTRUCT NEW IMPROVEMENTS SHOWN ON THESE PLANS.
 - FOR CONCRETE REMOVAL, REMOVE TO THE NEXT NEAREST TOOLED JOINT OR EXPANSION JOINT OF IMPROVEMENTS DESIGNATED TO REMAIN.
 - FOR ASPHALTIC PAVEMENT REMOVAL, SAWCUT TO A STRAIGHT, CLEAN EDGE AT LOCATIONS INDICATED ON THE PLANS.
- REFER TO MECHANICAL, ELECTRICAL, PLUMBING, IRRIGATION, AND ARCHITECTURAL PLANS FOR ADDITIONAL DEMOLITION AND COORDINATION.
- COMPLIANCE WITH FIRE SAFETY DURING CONSTRUCTION WILL BE ENFORCED.



Know what's below.
Call before you dig.



ARCHITECT PBK Architects, Inc.
FRESNO
7790 North Palm Avenue
Fresno, CA 93711
559-445-8400 P
559-445-8467 F
PBK.com



LINCOLN ELEMENTARY SCHOOL

650 LIBERTY LANE, MADERA, CA 93637

CONSTRUCTION DOCUMENTS

PROFESSIONAL SEAL



PROJECT NUMBER
220486
DATE
5/2/24
DSA APPLICATION NO.
02-121587
FILE NO.
20-30
PTN NO.
65243-141
DRAWN BY
BC

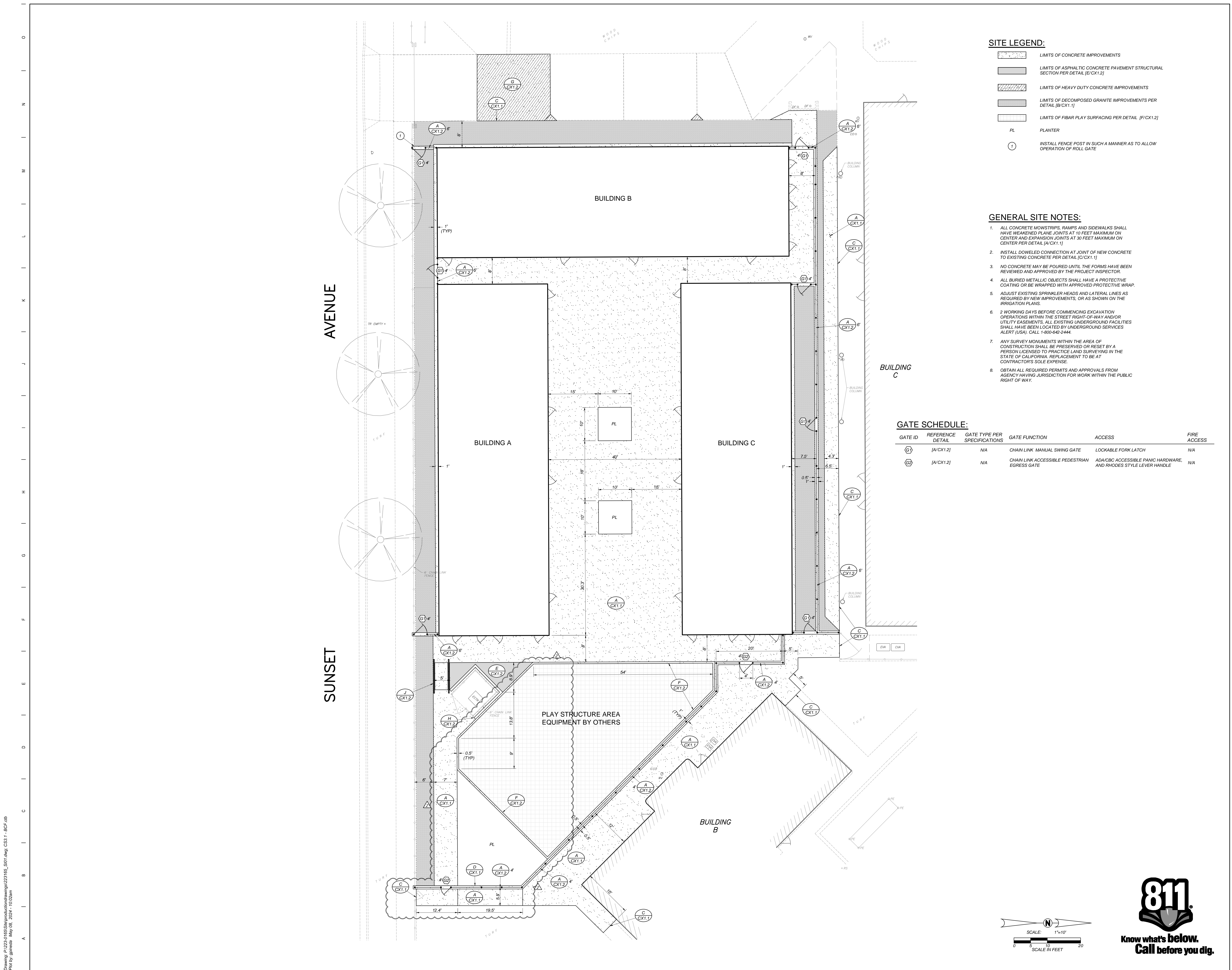
REVISIONS
DESCRIPTION DATE
1 ADDENDUM 3 5/8/2024

CONSTRUCTION DOCUMENTS

DEMOLITION
PLAN

CS2.1

Drawing: P:\223-0160\Sites\production\mwp\223160_S01.dwg CS3.1 - BCF.rvt
Plot by garibola May 06, 2024 - 10:02am



SITE LEGEND:

- LIMITS OF CONCRETE IMPROVEMENTS
- LIMITS OF ASPHALTIC CONCRETE PAVEMENT STRUCTURAL SECTION PER DETAIL [E/CX1.2]
- LIMITS OF HEAVY DUTY CONCRETE IMPROVEMENTS
- LIMITS OF DECOMPOSED GRANITE IMPROVEMENTS PER DETAIL [B/CX1.1]
- LIMITS OF FIBAR PLAY SURFACING PER DETAIL [F/CX1.2]
- PL PLANTER
- 1 INSTALL FENCE POST IN SUCH A MANNER AS TO ALLOW OPERATION OF ROLL GATE

GENERAL SITE NOTES:

- ALL CONCRETE MOWSTRIPS, RAMPS AND SIDEWALKS SHALL HAVE WEAKENED PLANE JOINTS AT 10 FEET MAXIMUM ON CENTER AND EXPANSION JOINTS AT 30 FEET MAXIMUM ON CENTER PER DETAIL [A/CX1.1]
- INSTALL DOVELED CONNECTION AT JOINT OF NEW CONCRETE TO EXISTING CONCRETE PER DETAIL [C/CX1.1]
- NO CONCRETE MAY BE POURED UNTIL THE FORMS HAVE BEEN REVIEWED AND APPROVED BY THE PROJECT INSPECTOR.
- ALL BURIED METALLIC OBJECTS SHALL HAVE A PROTECTIVE COATING OR BE WRAPPED WITH APPROVED PROTECTIVE WRAP.
- ADJUST EXISTING SPRINKLER HEADS AND LATERAL LINES AS REQUIRED BY NEW IMPROVEMENTS, OR AS SHOWN ON THE IRRIGATION PLANS.
- 2 WORKING DAYS BEFORE COMMENCING EXCAVATION/ OPERATIONS WITHIN THE STREET RIGHT-OF-WAY AND/OR UTILITY EASEMENTS, ALL EXISTING UNDERGROUND FACILITIES SHALL HAVE BEEN LOCATED BY UNDERGROUND SERVICES ALERT (USA). CALL 1-800-662-2444.
- ANY SURVEY MONUMENTS WITHIN THE AREA OF CONSTRUCTION SHALL BE PRESERVED OR RESET BY A PERSON LICENSED TO PRACTICE LAND SURVEYING IN THE STATE OF CALIFORNIA. REPLACEMENT TO BE AT CONTRACTOR'S SOLE EXPENSE.
- OBTAIN ALL REQUIRED PERMITS AND APPROVALS FROM AGENCY HAVING JURISDICTION FOR WORK WITHIN THE PUBLIC RIGHT OF WAY.

GATE SCHEDULE:

GATE ID	REFERENCE DETAIL	GATE TYPE PER SPECIFICATIONS	GATE FUNCTION	ACCESS	FIRE ACCESS
G1	[A/CX1.2]	N/A	CHAIN LINK MANUAL SWING GATE	LOCKABLE FORK LATCH	N/A
G2	[A/CX1.2]	N/A	CHAIN LINK ACCESSIBLE PEDESTRIAN EGRESS GATE	ADA/CBC ACCESSIBLE PANIC HARDWARE, AND RHODES STYLE LEVER HANDLE	N/A



ARCHITECT PBK Architects, Inc.
FRESNO
7790 North Palm Avenue
Fresno, CA 93711
559-445-8400 P
559-445-8407 F
PBK.com



LINCOLN ELEMENTARY SCHOOL

650 LIBERTY LANE, MADERA, CA 93637

CONSTRUCTION DOCUMENTS

PROFESSIONAL SEAL



PROJECT NUMBER

220486

DATE

5/2/24

DSA APPLICATION NO.

02-121587

FILE NO.

20-30

PTN NO.

65243-141

DRAWN BY

BC

REVISIONS

#	DESCRIPTION	DATE
1	ADDENDUM 3	5/8/2024

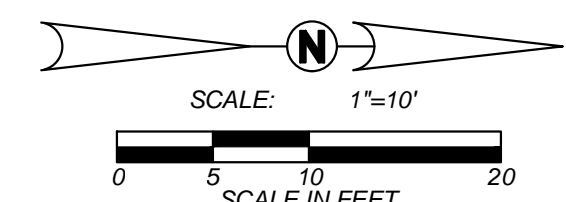
CONSTRUCTION DOCUMENTS

SITE PLAN

CS3.1



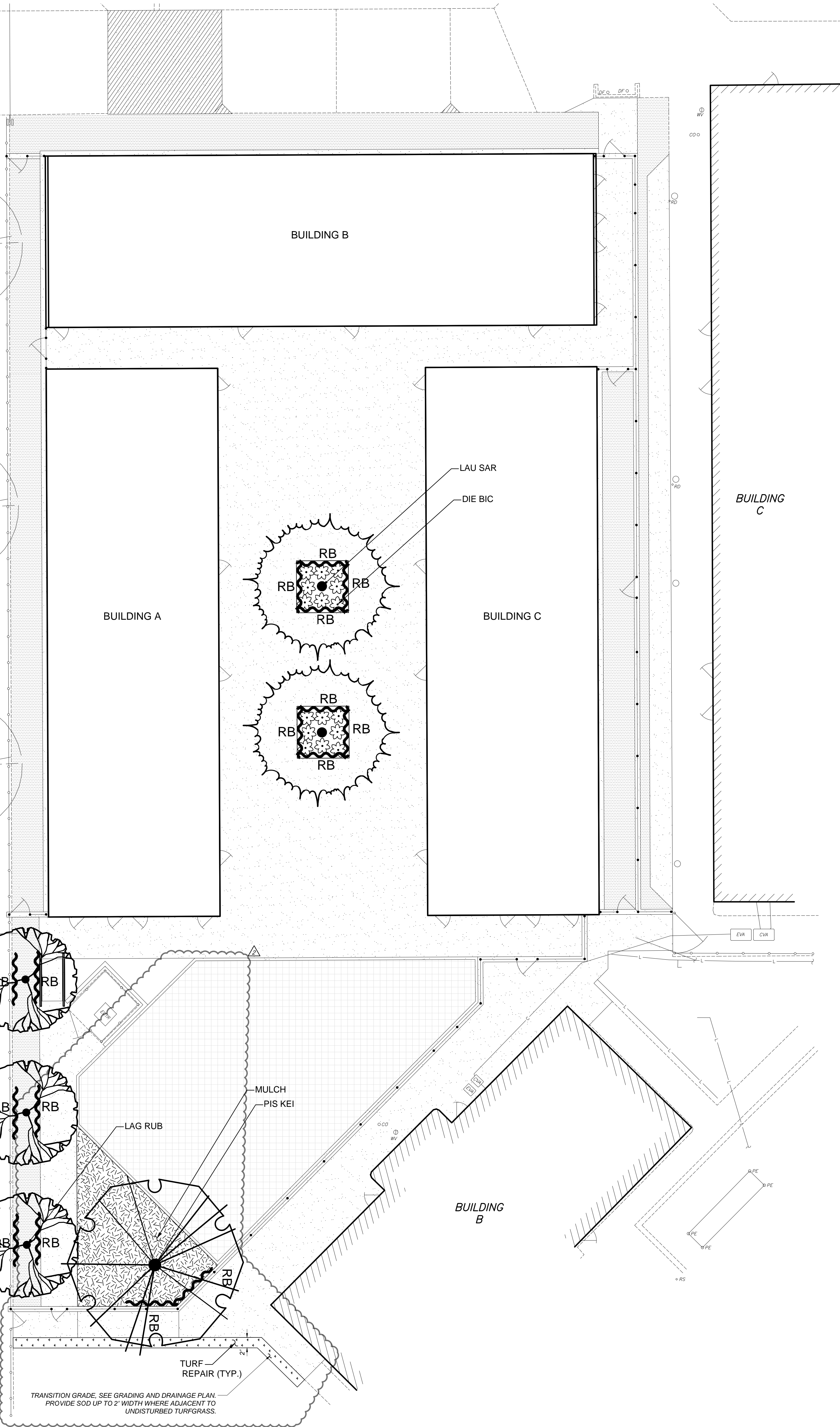
Know what's below.
Call before you dig.



ADDENDUM - 3

AVENUE

SUNSET



PLANT LEGEND

SYMBOL	CODE	BOTANICAL / COMMON NAME	CONT	WATER USE	QTY	DETAIL	REMARKS
LARGE TREES							
	PIS KEI	PISTACIA CHINENSIS 'KEITH DAVEY' KEITH DAVEY CHINESE PISTACHE	24"BOX B/L1.2	L	1	A/L1.2	DECIDUOUS. STANDARD FORM. FULL SUN. ORANGE-CRIMSON FALL COLOR MS: 30-40' H X 25-35' W
SMALL TREES							
	LAG RUB	LAGERSTROEMIA INDICA 'RUBRA' RED CRAPE MYRTLE	24"BOX B/L1.2	L	3	A/L1.2	DECIDUOUS. FULL SUN. SUMMER FLOWERING. MS: 25' H X 25' W
MEDIUM TREES							
	LAU SAR	LAURUS NOBILIS SWEET BAY	24"BOX	L	2	A/L1.2	EVERGREEN. FULL SUN OR PART SHADE. GREEN, WHITE, YELLOW FLOWERS IN SPRING MS: 40' H X 25' W
PERENNIALS							
	DIE BIC	DIETES BICOLOR FORTNIGHT LILY	1 GAL	L	16	D/L1.2	FULL SUN. LIGHT YELLOW IRIS-LIKE FLOWERS WITH VIVID MAROON BLOTCHES MS: 2'-3' H X 2'-3' W
GROUND COVERS							
	MULCH	WALK-ON WOOD MULCH	N/A	N/A	546 SF	E/L1.2	MIN. 3 INCH DEPTH. SEE PLANTING NOTE #13. QUANTITY IS IN ADDITION TO THAT PROVIDED IN THE MIXED PLANTING AREA.
	TURF	'CELEBRATION' BERMUDAGRASS	SOD	M	117 SF	F/L1.2	INSTALL FULL WIDTH SOD TO THE LIMITS OF DISTURBANCE. VERIFY QUANTITY.
	RR	ROOT BARRIER UB24-2				C/L1.2	

LANDSCAPE PLANTING AREA REQUIREMENT (DSA 1-L)

	AREA (SF)
NEW BUILDING FOOTPRINT:	10,440
REQUIRED MIWLO COMPLIANT PLANTING:	7,830
EXISTING IRRIGATED AREA DESIGNATED FOR REMOVAL:	15,111
PROPOSED MIWLO COMPLIANT PLANTING:	200
TOTAL CREDIT FOR MIWLO COMPLIANT PLANTING:	15,311
EXCESS (DEFICIT) OF PROPOSED COMPLIANT PLANTING:	7,481

LANDSCAPE SHADE CALCULATIONS			
		SHADING PER CALGREEN 5.106.12	
SITE SHADING - LANDSCAPE & HARDSCAPE		QUANTITY PROPOSED (SF)	SHADE AREA REQUIRED (SF)
LANDSCAPED AREA (EXCLUDING SPECIAL USE & PARKING LANDSCAPE AREAS)		200	40
UNCOVERED HARDSCAPE AREA (EXCLUDING PARKING HARDSCAPE AREAS)		15,422	3,084
TOTAL SITE SHADE REQUIRED			3,124
PROVIDED SHADE TREES		PROVIDED SHADE AREA	NO. TREES
VERY LARGE (40' dia. = 1256 SF)		0	0
LARGE (35' dia. = 962 SF)		962	1
MEDIUM (30' dia. = 707 SF)		1,414	2
SMALL (20' dia. = 314 SF)		942	3
TOTALS		3,318	6
OVER (UNDER) LANDSCAPE & HARDSCAPE SHADE REQUIREMENT			194

LANDSCAPE PLANTING BID ALLOWANCE:

CONTRACTOR SHALL INCLUDE A BID ALLOWANCE IN THE AMOUNT OF \$1,000 FOR THE REMOVAL AND REPLACEMENT OF EXISTING PLANTS/TURFGRASS AND/OR THE INSTALLATION OF NEW PLANTS/TURFGRASS WHERE NOT SPECIFICALLY SHOWN ON THE DRAWINGS FOR REPLACEMENT OR INSTALLATION.

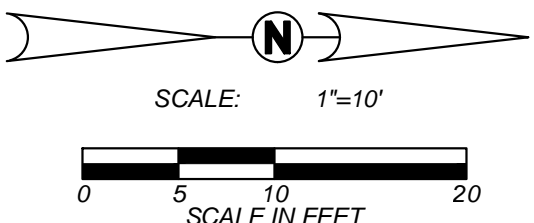
WATER CONSERVATION COMPLIANCE STATEMENT:

I HAVE COMPLIED WITH THE CRITERIA OF THE LANDSCAPE WATER CONSERVATION ORDINANCE AND GUIDELINES, AND HAVE APPLIED THEM FOR THE EFFICIENT USE OF WATER IN THE PLANTING DESIGN PLAN.

DAVID W. BRILEY, P.E. 2787

LANDSCAPE PLANTING OBSERVATION LOG				
ITEM NO.	WORK ITEM DESCRIPTION	REVIEWED & ACCEPTED BY OWNER'S REP OR LAND ARCH		DATE
		PRINT NAME	SIGNATURE	
PL-1	REPORT & PROTECTION OF EXISTING TREES			
PL-2	RIPPING OF PLANTING AREAS			
PL-3	SOIL CONDITIONING & TILLAGE DEPTH			
PL-4	IRRIGATION COVERAGE PRIOR TO PLANTING			
PL-5	FINISH GRADING PRIOR TO PLANTING			
PL-6	TREES - INITIAL QUALITY & LAYOUT			
PL-7	PLANTS - INITIAL QUALITY & LAYOUT			
PL-8	GRANULAR PRE-EMERGENT HERBICIDE IN MULCHED AREAS			
PL-9	WOOD MULCH DEPTH			
NOTES:		THE ORIGINAL VERSION OF THIS LOG SHALL BE MAINTAINED ON THE AS-BUILT RECORD DRAWING SET. WORK ITEMS MAY NOT BE REVIEWED IF PRIOR WORK ITEMS HAVE NOT BEEN ACCEPTED.		

SEE SHEET L1.2
FOR DETAILS AND
NOTES



ARCHITECT PBK Architects, Inc.
FRESNO
7790 North Palm Avenue
Fresno, CA 93711
559-445-8400 P
559-445-8467 F
PBK.com

Blair Church & Flynn
CONSULTING ENGINEERS

LINCOLN ELEMENTARY SCHOOL

650 LIBERTY LANE, MADERA, CA 93637
CONSTRUCTION DOCUMENTS

PROFESSIONAL SEAL

DAVID W. BRILEY, P.E.
STATE OF CALIFORNIA

PROJECT NUMBER		
220486		
DATE		
5/2/24		
DSA APPLICATION NO.		
02-121587		
FILE NO.		
20-30		
PTN NO.		
65243-141		
DRAWN BY		
KC		
REVISIONS		
#	DESCRIPTION	DATE
1	ADDENDUM 3	5/8/2024

CONSTRUCTION DOCUMENTS

PLANTING
PLAN

L1.1

ADDENDUM - 3



ARCHITECT

PBK Architects, Inc.

FRESNO

7790 North Palm Avenue

Fresno, CA 93711

559-449-8400 P

559-449-8407 F

PBK.com

Blair Church & Flynn

CONSULTING ENGINEERS

LINCOLN ELEMENTARY SCHOOL

650 LIBERTY LANE, MADERA, CA 93637

CONSTRUCTION DOCUMENTS



PROJECT NUMBER		
220486		
DATE		
5/2/24		
DSA APPLICATION NO.		
02-121587		
FILE NO.		
20-30		
PTN NO.		
65243-141		
DRAWN BY		
KC		
REVISIONS		
#	DESCRIPTION	DATE
1	ADDENDUM 3	5/8/2024

CONSTRUCTION DOCUMENTS

IRRIGATION PLAN

IR1.1

IRRIGATION LEGEND

SYMBOL	MANUFACTURER/MODEL/DESCRIPTION	ARC	PSI	GPM	RADIUS	DETAIL
☼	TREE BUBBLER 50 HUNTER PROS-PRS30-04-CV-PCN-50	360	30	0.5	3'	K/IR1.2
SYMBOL	MANUFACTURER/MODEL/DESCRIPTION					
☐	DRIP CONTROL KIT 3/4" HUNTER ICZ-101-25-LF					
⌒	FLUSH VALVE ASSEMBLY					D/IR1.3
⌒	AIR/VACUUM RELIEF VALVE HUNTER AVR-075. INSTALL AT HIGHEST TUBING ELEVATION IN EACH DRIP ZONE. INSTALL IN A ROUND GREEN VALVE BOX					E/IR1.3
⌒	DRIP SYSTEM OPERATION INDICATOR HUNTER ECO-ID					F/IR1.3
⌒	AREA TO RECEIVE DRIP LINE HUNTER HDL-06-18-COP PRESSURE COMPENSATING LANDSCAPE DRIP LINE WITH CHECK VALVE. 0.6 GPH EMITTERS AT 18" O.C. DRIP LINE LATERALS SPACED AT 18" APART. WITH EMITTERS OFFSET FOR TRIANGULAR PATTERN. MINIMUM 3" COVER					B/IR1.3
SYMBOL	MANUFACTURER/MODEL/DESCRIPTION					DETAIL
⌒	REMOTE CONTROL VALVE HUNTER ICZ-101G					F/IR1.2
⌒	QUICK COUPLER VALVE HUNTER-44RC WITH HK44 KEY AND HS2 HOSE SWIVEL					J/IR1.2
⌒	GATE VALVE SMALL MBCO 1-1134. OR EQUAL (SMALL PIPE SIZE)					G/IR1.2
⌒	EXISTING CONTROLLER - CA HUNTER ICC2 (32 STATIONS/ 18 USED/ 18 SPARE WIRES) - FIELD. LOCATED AT PUMP YARD.					
⌒	EXISTING CONTROLLER - CB HUNTER I-CORE (42 STATIONS/ 21 USED/ 21 SPARE WIRES). LOCATED AT PUMP YARD.					
⌒	EXISTING BOOSTER PUMP					
⌒	SPLICE BOX					I/IR1.2
---	IRRIGATION LATERAL LINE: PVC SCHEDULE 40 SOLVENT WELD. SIZE AS NOTED					C/IR1.2
---	IRRIGATION MAINLINE: PVC SCHEDULE 40 SOLVENT WELD. SIZE AS NOTED					A/IR1.2
---	PIPE SLEEVE: PVC SCHEDULE 40 TWICE PIPE SIZE					E/IR1.2
#	VALVE NUMBER					
#	VALVE FLOW (GPM)					
#	VALVE SIZE					
.....	CONTROL WIRE PLUS ONE (1) COMMON WIRE					D/IR1.2
---	EXISTING LATERAL LINE					
---	EXISTING MAIN LINE					
✱	EXISTING ROTOR					
+	PROPOSED TREE. SEE PLANTING PLAN ON SHEET L201 FOR VARIETY AND SIZE					
A	RE-ROUTE MAIN LINE AND RECONNECT NEW MAIN LINE TO EXISTING MAIN LINE.					
B	REMOVE EXISTING IRRIGATION VALVE XB-6/ 1". RETURN TO OWNER. USE CONTROLLER STATION FOR NEW IRRIGATION VALVE.					
C	REMOVE EXISTING IRRIGATION VALVE XA-14/ 1". RETURN TO OWNER. USE CONTROLLER STATION FOR NEW IRRIGATION VALVE.					
D	REMOVE EXISTING IRRIGATION VALVE XA-19/ 1". RETURN TO OWNER.					
E	REMOVE EXISTING IRRIGATION VALVE XB-3 1". RETURN TO OWNER.					
F	PROTECT HEADS FOR NEW HARDSCAPE. ADJUST HEADS/NOZZLES FOR NEW IMPROVEMENTS. SEE GENERAL IRRIGATION NOTE #17					
G	CHANGE SPRINKLER HEAD ARC TO MINIMIZE OVERSPRAY ONTO HARDSCAPE					

POINT OF CONNECTION # 1 & 2

WATER SERVICE SIZE: MAX FLOW: 3" / 120 GPM
WATER METER SIZE: 75% MAX FLOW: 4" / 350 GPM
MAXIMUM STATION FLOW: 6.0 GPM
IRRIGATION BACKFLOW SIZE: 4"
IRRIGATION WATER SOURCE: CITY OF MADERA
MINIMUM EXISTING MINIMUM STATIC PRESSURE H/L: 70' / 55 PSI
SEE IRRIGATION GENERAL NOTE #3
MINIMUM OPERATING PRESSURE: 30 PSI BUBBLER

IRRIGATION SYSTEM BID ALLOWANCE:

CONTRACTOR SHALL INCLUDE A BID ALLOWANCE IN THE AMOUNT OF \$1,000 FOR THE REPLACEMENT OF EXISTING OR THE INSTALLATION OF NEW SPRINKLER HEADS, VALVES, PIPING AND OTHER EQUIPMENT AND ACCESSORIES NECESSARY FOR THE PROPER OPERATION OF THE EXISTING SYSTEM WHERE NOT SPECIFICALLY SHOWN ON THE DRAWINGS FOR REPLACEMENT OR NEW INSTALLATION.

WATER CONSERVATION COMPLIANCE STATEMENT:

I HAVE COMPLIED WITH THE CRITERIA OF THE LANDSCAPE WATER CONSERVATION ORDINANCE AND GUIDELINES, AND HAVE APPLIED THEM FOR THE EFFICIENT USE OF WATER IN THE IRRIGATION DESIGN PLAN.

David W. Briley
DAVID W. BRILEY, P.E. 2787

BOOSTER PUMP PARAMETERS

LOCATED AT PUMP YARD
OPERATIONAL DISCHARGE PRESSURE: 65 PSI
MAXIMUM OUTPUT FLOW: CONTRACTOR SHALL VERIFY OUTPUT FLOW
ACTIVATION MODE: CONTROLLER PROGRAM WITH PUMP START RELAY
PUMP SIZE: 7.5 HORSEPOWER
PUMP TYPE: VARIABLE FREQUENCY DRIVE

IRRIGATION SYSTEM OBSERVATION LOG		REVIEWED & ACCEPTED BY OWNER'S REP OR LAND ARCH		DATE
ITEM NO.	WORK ITEM DESCRIPTION	PRINT NAME	SIGNATURE	
IR-1	EXISTING SYSTEM OPERATION & PRESSURE CHECK			
IR-2	PIPING/WIRE SLEEVES UNDER PAVEMENT			
IR-3	MAIN LINE INSTALLATION & PRESSURE TEST			
IR-4	VALVE INSTALLATIONS			
IR-5	IRRIGATION COVERAGE PRIOR TO PLANTING			
IR-6	CONTROL EQUIPMENT INSTALLATION	N/A	N/A	
IR-7	BOOSTER PUMP INSTALLATION & START-UP (MANUF.)	N/A	N/A	
IR-8	FINAL SYSTEM OPERATION REVIEW			
NOTE: THE ORIGINAL VERSION OF THIS LOG SHALL BE MAINTAINED ON THE AS-BUILT RECORD DRAWING SET. WORK ITEMS MAY NOT BE REVIEWED IF PRIOR WORK ITEMS HAVE NOT BEEN ACCEPTED.				

SEE SHEET IR1.2 AND IR1.3
FOR IRRIGATION NOTES
AND DETAILS

