

Desmond

- Remove four islands and Replace with 3/6 Parking lot specifications
- Installation of 3" hot asphalt over 6" New Aggregate Base
- Add valley gutters (match existing)
- Seal and restripe



Pershing

- Remove four islands and Replace with 3/6 Parking lot specifications
- Installation of 3" hot asphalt over 6" New Aggregate Base
- Add valley gutters (match existing)
- Add curbing (match existing)
- Seal and restripe
- Remove one tree and stump.



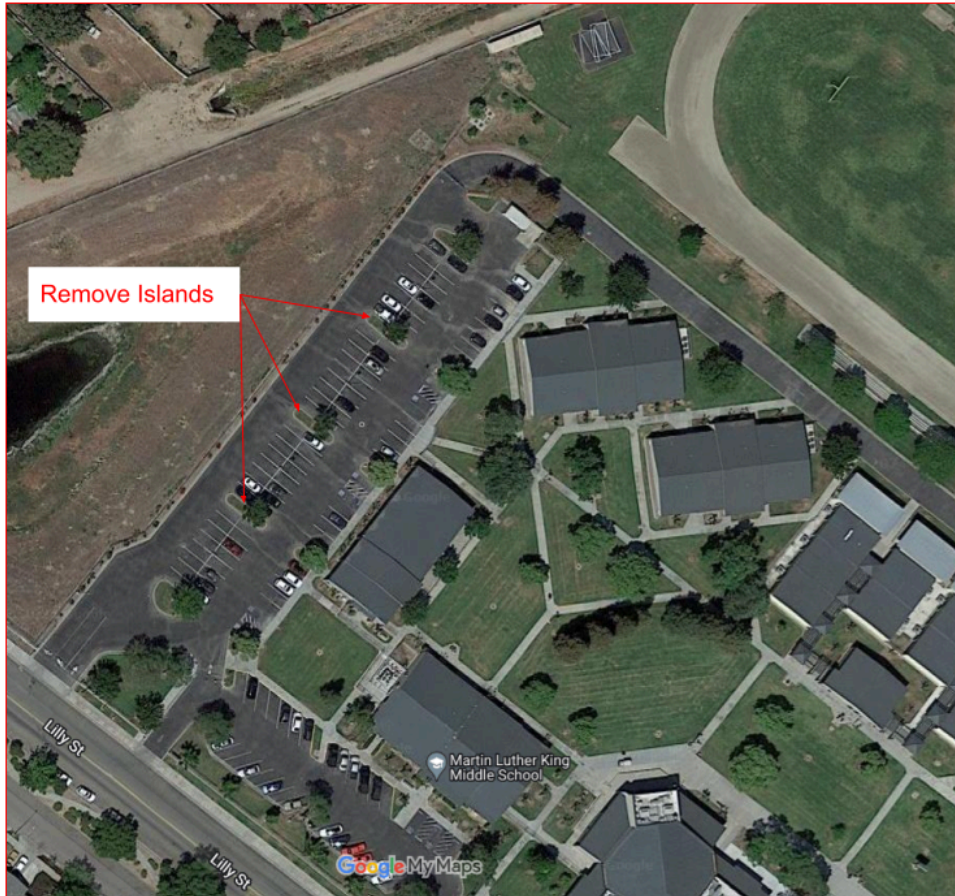
Lincoln

- Remove islands and Replace with 3/6 Parking lot specifications
- Installation of 3" hot asphalt over 6" New Aggregate Base
- Add curbing (match existing)
- Seal and restripe



MLK

- Remove three islands and Replace with 3/6 Parking lot specifications
- Installation of 3" hot asphalt over 6" New Aggregate Base
- Add valley gutters (match existing)
- Seal and restripe



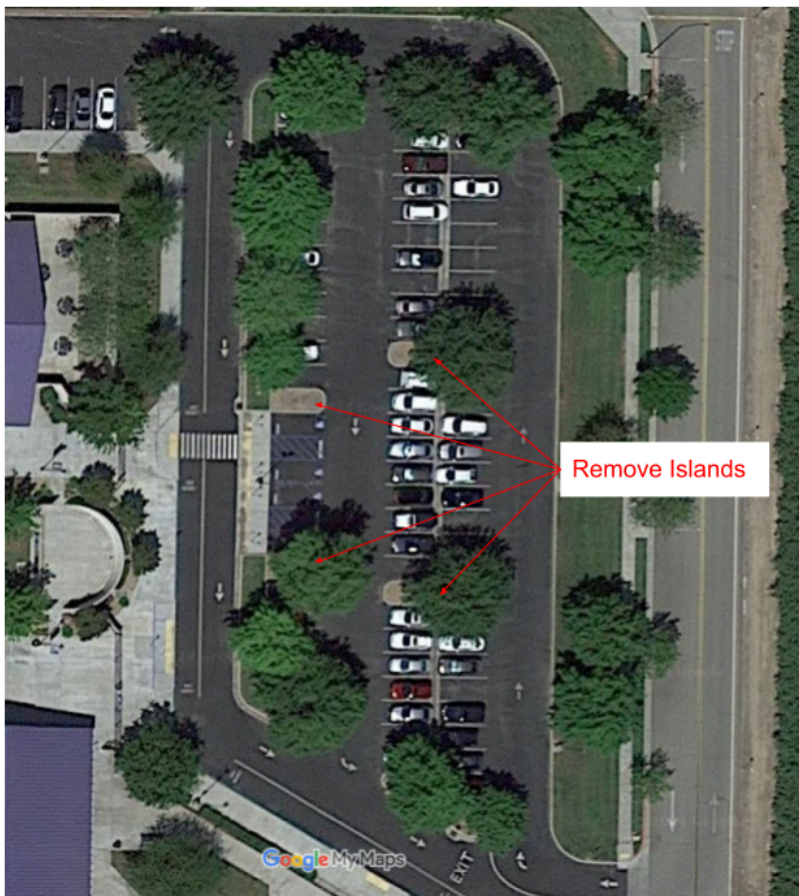
Chavez

- Remove four islands and Replace with 3/6 Parking lot specifications
- Installation of 3" hot asphalt over 6" New Aggregate Base
- Add valley gutters (match existing)
- Add curbing (match existing)
- Seal and restripe



Parkwood

- Remove four islands and Replace with 3/6 Parking lot specifications
- Installation of 3" hot asphalt over 6" New Aggregate Base
- Add valley gutters (match existing)
- Add curbing (match existing)
- Seal and restripe



Adams

Section A

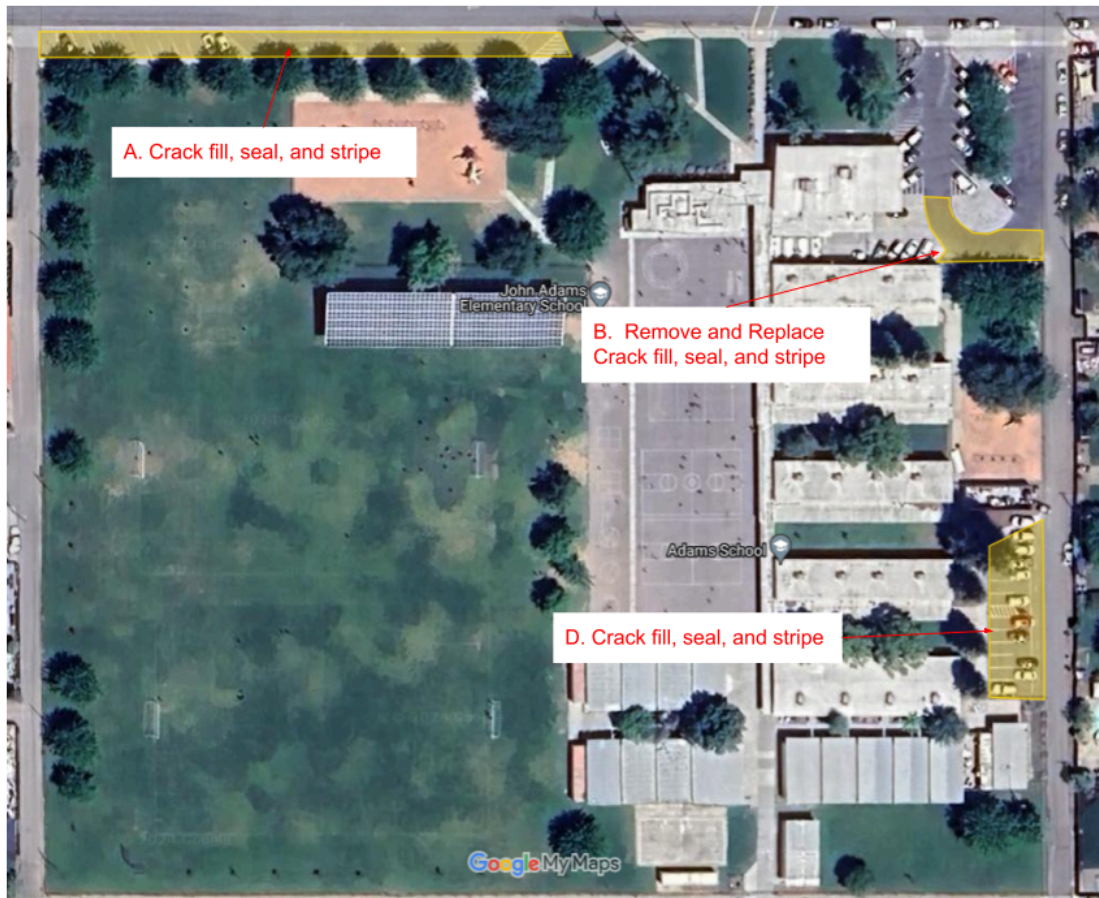
- Crack fill, seal, and stripe

Section B

- Remove and Replace with 4/6 Bus lane specifications
- Installation of 2" and 2" inch lifts of hot asphalt over 6" New Aggregate Base
- Install concrete mow strip 12" wide by 56' feet length by 6" depth. Control joints every 10 feet.
- Seal and strip

Section D

- Crack fill, seal, and stripe



Washington

- Crack fill, seal, and stripe
- 1' foot patch back repair (1'x5')



