

# Addendum No. 03

May 8, 2024



## Universal Transitional Kindergarten Lincoln Elementary School

---

**OWNER:** MADERA UNIFIED SCHOOL DISTRICT  
1902 HOWARD ROAD  
MADERA, CA 93637

**PREPARED BY:** PBK Architects, Inc.  
7790 N. Palm Avenue  
Fresno, California 93711

**PBK PROJECT NO.:** 220486  
**DSA FILE NO.:** 20-30  
**DSA APPLICATION NO.:** 02-121587

### NOTICE TO BIDDERS

- A. Receipt of this Addendum shall be acknowledged on the Proposal Form.
  - B. This Addendum forms part of the Contract Documents for the above referenced project and shall be incorporated integrally therewith.
  - C. Each proposer shall make necessary adjustments and submit their proposal with full knowledge of all modifications, clarifications, and supplemental data included therein. Where provisions of the following supplemental data differ from those of the original Contract Documents, this Addendum shall govern.
- 

### DRAWINGS:

**3-01 CS2.1 – DEMOLITION PLAN**, revise as follows:

- a. Additional concrete removal and revisions have been clouded with delta 2. Remove and replace with attached drawing.

**3-02 CS3.1 – SITE PLAN**, revise as follows:

- a. Extension of play equipment areas; revisions have been clouded with delta 2. Remove and replace with attached drawing.
- b. Extension of sidewalks and addition of a pedestrian gate. Revisions have been clouded with delta 2. Remove and replace with attached drawing.

**3-03 CS4.1 – GRADING AND DRAINAGE PLAN**, revise as follows:

- a. Revised grading within play equipment areas and sidewalks. Revisions have been clouded with delta 2. Remove and replace with attached drawing.

**3-04 L1.1 – PLANTING PLAN**, revise as follows:

- a. Relocate large tree at revised area; Revisions have been clouded with delta 2. Remove and replace with attached drawing.

**3-05 L1.2 – PLANTING DETAILS**, revise as follows:

- a. Added mulch detail E, and revisions have been clouded with delta 2. Remove and replace with attached drawing.

## Universal Transitional Kindergarten Lincoln Elementary School

---

- b. Added turf repair detail F, and revisions have been clouded with delta 2. Remove and replace with attached drawing.

**3-06 IR1.1 – IRRIGATION PLAN**, revise as follows:

- a. Modified irrigation line at revised area and revisions have been clouded with delta 2. Remove and replace with attached drawing.
- b. Added keynotes F and G; revisions have been clouded with delta 2. Remove and replace with attached drawing.

### CLARIFICATIONS:

**3-07 AT.1 – COVER SHEET**, revise as follows:

- c. Allowable area calculation changed to show correct square footage for new buildings and for fire safety codes.
- d. Scope of work change for additional portable buildings to the project.

**3-08 AT.2 – NOTES**, revise as follows:

- a. Removed text for description of California code to be added to plans.
- b. Added note “24” to general notes for durable or preservative treated woods sills for portables.

**3-09 AS.1 – OVERALL SITE PLAN**, revise as follows:

- a. Change of the frontage area increase around new modular building with assumed property lines & dimensions for the fire separation distance.
- b. Removed the safety dispersal area from the plan with lighting.
- c. Assigned building identifiers for portable buildings & following the DSA IR-16 code sections for portables.

**3-10 AS.2.1 – ENLARGED PARTIAL DEMO PLAN**, omit sheet from plan.

**3-11 AS.3 – ENLARGED PARTIAL SITE PLAN**, revise as follows:

- a. Changed the direction of the swing gate to the path of egress.

**3-12 AS.3.1 – ENLARGED PARTIAL SITE PLAN**, revise as follows:

- a. Details of portables foundation plan, sill plate, ramps were added to the plan.
- b. Placed spot levels for sill plate and finish floor height to portables per the DSA IR – 16 compliance sections.
- c. Added keynote of welding exceptions for relocatable ramps.
- d. Added general note from DSA IR – 16 code section to plan.

**3-13 AS.4 – FLOOR PLAN**, revise as follows:

- a. Fire sprinkler room label to be removed from sheet.
- b. Added keynote of plumbing wall cavities to be filled with non-combustible insulation.

**3-14 DT.2 – DETAILS**, revise as follows:

- a. Detail number 2 added note to detail for metal blocking detail.
- b. Changed metal blocking graphic to wood blocking graphic.
- c. Added text note for minimum penetration depth for wood screws.
- d. Details number 3 added note to detail for metal blocking detail.
- e. Change text of wood blocking and graphic.
- f. Added detail number 10 closure panel.

## Addendum No. 03

May 8, 2024



# Universal Transitional Kindergarten Lincoln Elementary School

---

**3-15 ES.1 – ELECTRICAL SITE PLAN**, revise as follows:

- a. Removal of safety dispersal area with lighting on sheet.
- b. Revised detail "Surface Mounted FACP" on sheet.

**3-16 FA0.1 – F.A. SHEET INDEX, LEGEND & NOTES**, revise as follows:

- a. Change of verbiage of fire alarm control panel under device schedule.

**3-17 BUILDING SERIES DSA PC 04-104244**, revise as follows:

- a. Crossed out older DSA stamps and changed the title of previous project to current project name.

**END OF ADDENDUM NO. 3**

A handwritten signature in blue ink, appearing to be 'D. Smith'.

---

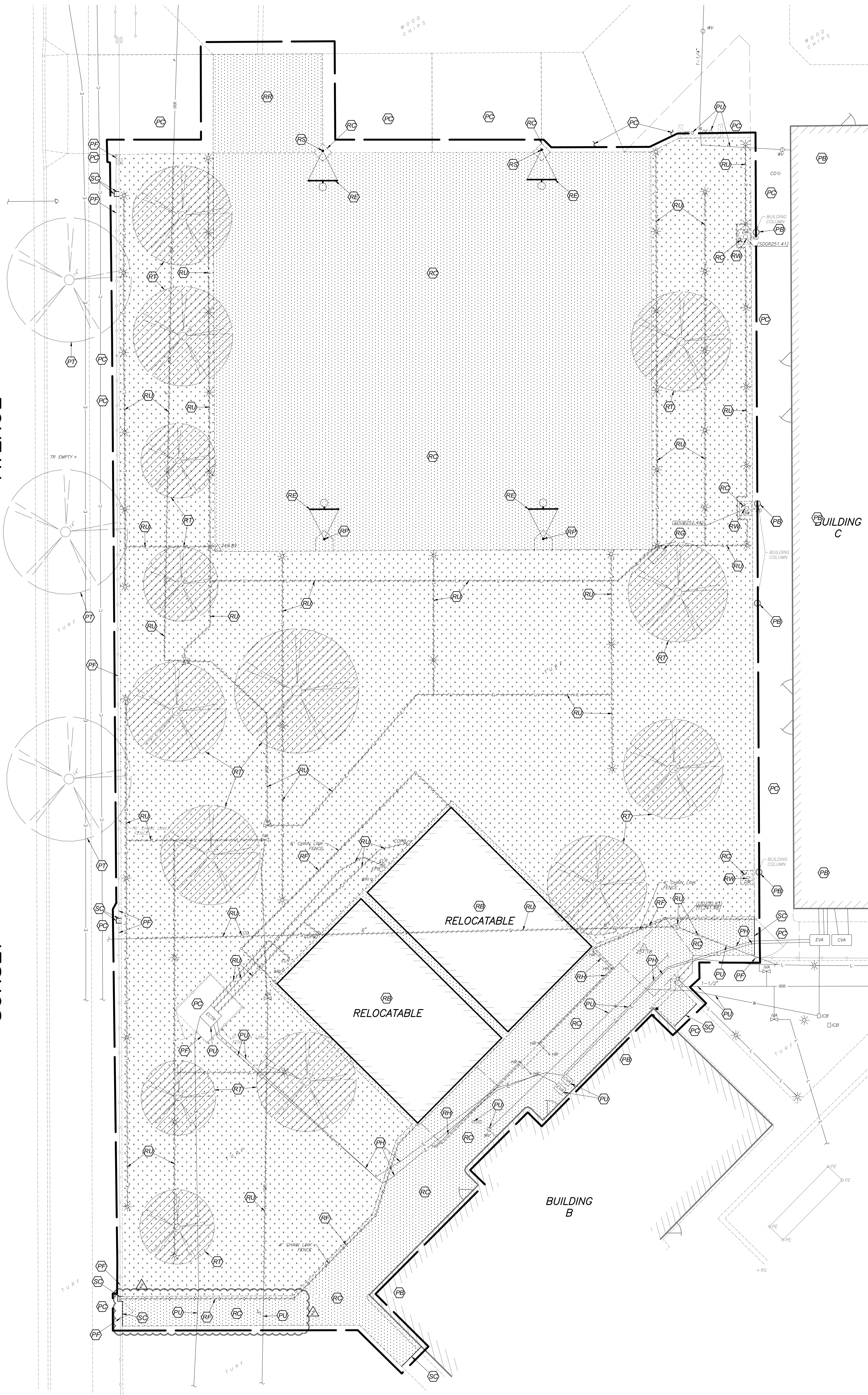
NAME OF ARCHITECT, Architect



Drawing: P:\223-0165\Site\production\mwp\223165\_DEM.dwg, CS2 - BCF.db  
Plot by garibola May 06, 2024 - 10:02am

AVENUE

SUNSET

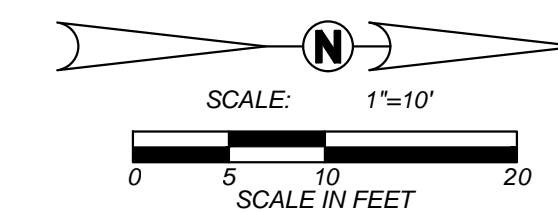


DEMOLITION LEGEND:

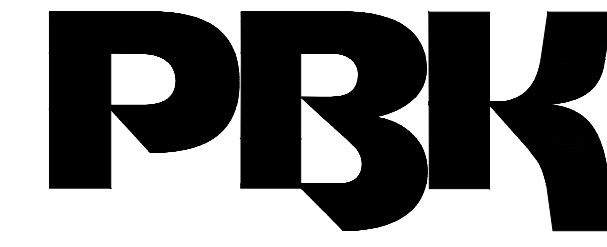
- REMOVE EXISTING IMPROVEMENTS AS NECESSARY TO CONSTRUCT NEW IMPROVEMENTS SHOWN ON THESE PLANS. UNLESS OTHERWISE NOTED ON THE PLAN, THE REMOVAL OF IMPROVEMENTS MUST BE COORDINATED WITH ALL PLAN SHEETS. CONTRACTOR MUST ALSO COORDINATE REMOVAL OF IMPROVEMENTS WITH UTILITY AGENCIES. PROTECT ALL IMPROVEMENTS NOT DESIGNATED FOR REMOVAL. SEE NOTE 1
- LIMITS OF VEGETATION REMOVAL. 4" MINIMUM DEPTH
- LIMITS OF CONCRETE IMPROVEMENT REMOVAL
- PROTECT BUILDING TO REMAIN
- PROTECT CONCRETE IMPROVEMENTS TO REMAIN
- PROTECT FENCE TO REMAIN
- POTHOLE AND LOCATE EXISTING ELECTRICAL FACILITIES PRIOR TO ANY EXCAVATION OR TRENCHING. PROVIDE DOCUMENTATION OF HORIZONTAL AND VERTICAL LOCATIONS TO ENGINEER BEFORE PROCEEDING.
- PROTECT TREE TO REMAIN
- PROTECT UTILITY TO REMAIN
- REMOVE AND LAWFULLY DISPOSE OF BUILDING
- REMOVE AND SALVAGE ATHLETIC EQUIPMENT TO OWNER
- REMOVE AND LAWFULLY DISPOSE OF CONCRETE IMPROVEMENTS
- REMOVE AND LAWFULLY DISPOSE OF CHAIN LINK FENCE FABRIC, POSTS AND FOOTINGS
- REMOVE AND LAWFULLY DISPOSE OF BENCH
- REMOVE AND LAWFULLY DISPOSE OF HAND RAILS
- REMOVE POST AND FOOTING COMPLETELY, BACKFILL VOID PER SPECIFICATIONS
- REMOVE AND REPLACE CONCRETE, INCLUDING PAINTING
- REMOVE CONCRETE FOOTING TO A DEPTH OF 12" BELOW GRADE AND CUT OFF GOAL POST. FILL REMAINING POST BELOW WITH 2-SACK SLURRY TO TOP OF PIPE
- REMOVE AND LAWFULLY DISPOSE OF TREE AND ROOTS
- REMOVE AND LAWFULLY DISPOSE OF UTILITY
- REMOVE DRAINWELL AND INLET BOX COMPLETELY, BACKFILL VOID PER SPECIFICATION
- SAWCUT
- REMOVE TREE
- LIMIT OF CHAIN LINK FENCE REMOVAL
- LIMIT OF IRRIGATION MAIN LINE REMOVAL
- LIMIT OF IRRIGATION LATERAL LINE REMOVAL
- LIMIT OF COMMUNICATION LINE REMOVAL
- LIMIT OF UNDERGROUND ELECTRICAL LINE REMOVAL

GENERAL DEMOLITION NOTES:

- THE "LIMIT OF DEMOLITION" SHOWN IS APPROXIMATE AND IS GENERALLY CONSIDERED TO BE THE MINIMUM REMOVAL REQUIREMENTS. CONTRACTOR MUST COORDINATE AS NOTED IN THE LEGEND.
- CONTRACTOR SHALL LEGALLY DISPOSE OF ALL DEMOLISHED MATERIALS OFF SITE.
- CONTRACTOR SHALL PROTECT ALL EXISTING UTILITY IMPROVEMENTS NOT SPECIFICALLY DESIGNATED FOR REMOVAL.
- THE ON-SITE UNDERGROUND UTILITIES SHOWN ON THIS SHEET ARE AT APPROXIMATE LOCATIONS. THE EXTENT, LOCATIONS AND SIZES ARE UNKNOWN. THE CONTRACTOR SHALL POT-HOLE TO LOCATE AND VERIFY THE UNDERGROUND UTILITY LINES PRIOR TO REMOVAL.
- CONTRACTOR TO PROTECT AND PRESERVE IN PLACE ANY FOUND SURVEY MONUMENTS. ANY MONUMENTS DISTURBED SHALL BE RESET BY A CALIFORNIA LICENSED SURVEYOR AND THE APPROPRIATE PAPERWORK FILED WITH THE CITY OR COUNTY, AT CONTRACTOR'S EXPENSE.
- ALL HAZARDOUS MATERIALS ENCOUNTERED DURING SITE DEMOLITION SHALL BE REMEDIATED AND DISPOSED OF PER STATE AND EPA REQUIREMENTS.
- CONTRACTOR SHALL CONTACT AND COORDINATE WITH ALL UTILITY AGENCIES PRIOR TO THE START OF ANY DEMOLITION OR CONSTRUCTION.
- ANY EXISTING UTILITIES AND/OR IMPROVEMENTS WHICH ARE TO REMAIN, THAT BECOME DAMAGED DURING CONSTRUCTION SHALL BE COMPLETELY RESTORED TO THE SATISFACTION OF THE OWNER AND AGENCY HAVING AUTHORITY, AT THE CONTRACTOR'S SOLE EXPENSE.
- REMOVE EXISTING IMPROVEMENTS AS NECESSARY TO CONSTRUCT NEW IMPROVEMENTS SHOWN ON THESE PLANS.
  - FOR CONCRETE REMOVAL, REMOVE TO THE NEXT NEAREST TOOLED JOINT OR EXPANSION JOINT OF IMPROVEMENTS DESIGNATED TO REMAIN.
  - FOR ASPHALTIC PAVEMENT REMOVAL, SAWCUT TO A STRAIGHT, CLEAN EDGE AT LOCATIONS INDICATED ON THE PLANS.
- REFER TO MECHANICAL, ELECTRICAL, PLUMBING, IRRIGATION, AND ARCHITECTURAL PLANS FOR ADDITIONAL DEMOLITION AND COORDINATION.
- COMPLIANCE WITH FIRE SAFETY DURING CONSTRUCTION WILL BE ENFORCED.



Know what's below.  
Call before you dig.



ARCHITECT PBK Architects, Inc.  
FRESNO  
7790 North Palm Avenue  
Fresno, CA 93711  
559-445-8400 P  
559-445-8467 F  
PBK.com



LINCOLN ELEMENTARY SCHOOL

650 LIBERTY LANE, MADERA, CA 93637

CONSTRUCTION DOCUMENTS

PROFESSIONAL SEAL



PROJECT NUMBER  
220486  
DATE  
5/2/24  
DSA APPLICATION NO.  
02-121587  
FILE NO.  
20-30  
PTN NO.  
65243-141  
DRAWN BY  
BC

REVISIONS  
# DESCRIPTION DATE  
1 ADDENDUM 3 5/8/2024

CONSTRUCTION DOCUMENTS

DEMOLITION  
PLAN

CS2.1









SEE VIEWPORT TO THE LEFT FOR CONTINUATION

# SUNSET

BUILDING I  
FF=251.50

BUILDING A  
FF=251.50

BUILDING C  
FF=251.50

*BUILDING*  
*B*



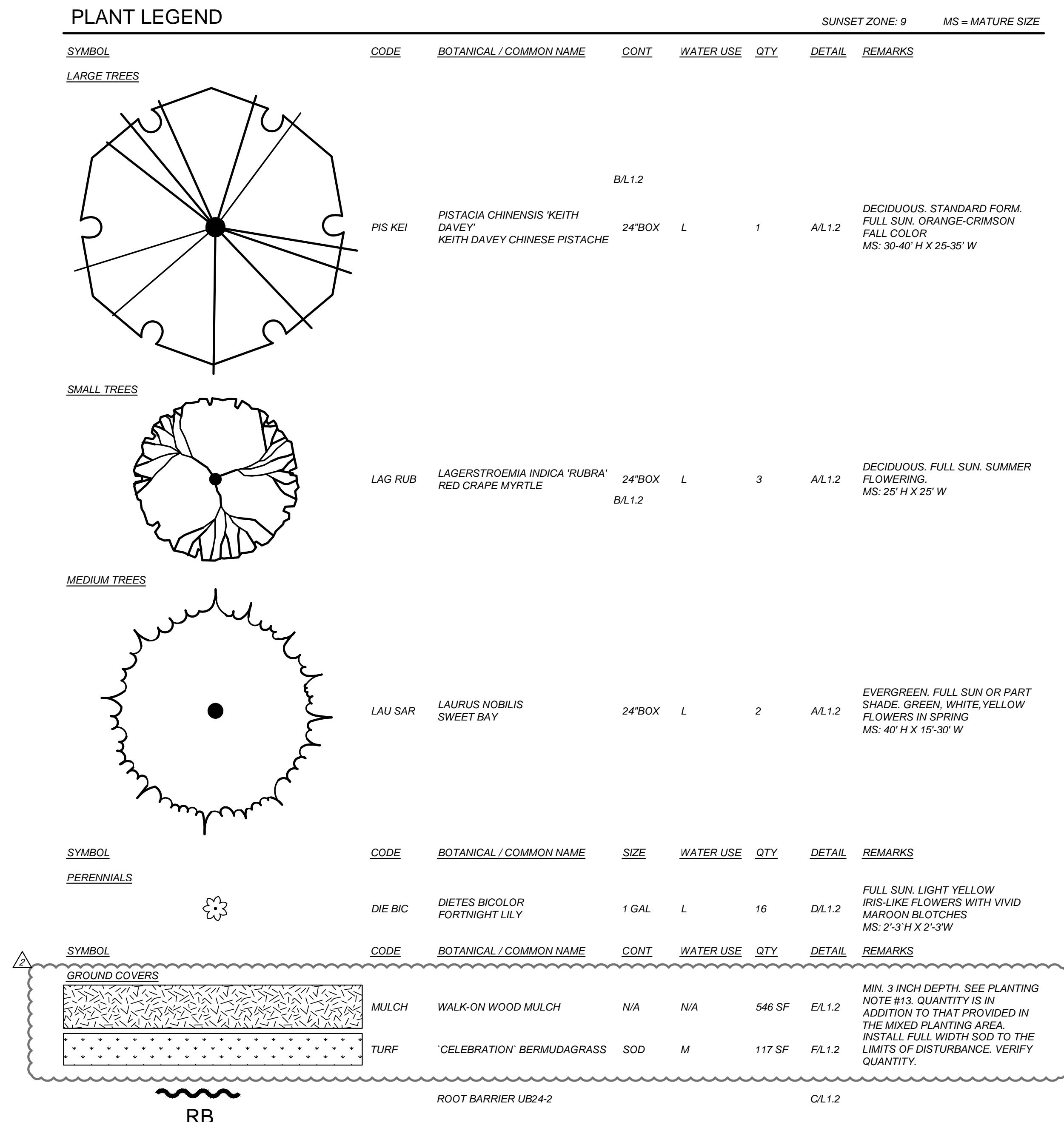
1/30/24  
Date Signed:

# CS4.1



AVENUE

# SUNSET



<u>LANDSCAPE PLANTING AREA REQUIREMENT (DSA 1-L)</u>	
	AREA (SF)
NEW BUILDING FOOTPRINT:	10,440
REQUIRED MWLO COMPLIANT PLANTING:	7,830
EXISTING IRRIGATED AREA DESIGNATED FOR REMOVAL:	15,111
PROPOSED MWLO COMPLIANT PLANTING:	200
TOTAL CREDIT FOR MWLO COMPLIANT PLANTING:	15,311
EXCESS I (DEFICIT) OF PROPOSED COMPLIANT PLANTING:	7,481

LANDSCAPE SHADE CALCULATIONS		SHADING PER CALC GREEN S 106.12	
SITE SHADING - LANDSCAPE & HARDSCAPE	QUANTITY PROPOSED (SF)	PERCENT REQUIRED	SHADE AREA REQUIRED (SF)
LANDSCAPED AREA (EXCLUDING SPECIAL USE & PARKING LANDSCAPE AREAS)	200	20	40
UNCOVERED HARDSCAPE AREA (EXCLUDING PARKING HARDSCAPE AREAS)	15,422	20	3,084
TOTAL SITE SHADE REQUIRED			3,124
PROVIDED SHADE TREES		PROVIDED SHADE AREA	NO. TREES
VERY LARGE (40" dia = 1236 SF)		0	0
LARGE (35" dia = 962 SF)		962	1
MEDIUM (30" dia = 707 SF)		1,414	2
SMALL (20" dia = 314 SF)		942	3
TOTALS		3,318	6
OVER (UNDER) LANDSCAPE & HARDSCAPE SHADE REQUIREMENT			194

CONTRACTOR SHALL INCLUDE A BID ALLOWANCE IN THE AMOUNT OF \$1,000 FOR THE REMOVAL AND REPLACEMENT OF EXISTING PLANTS/TURFGRASS AND/OR THE INSTALLATION OF NEW PLANTS/TURFGRASS WHERE NOT SPECIFICALLY SHOWN ON THE DRAWINGS FOR REPLACEMENT OR INSTALLATION.

I HAVE COMPLIED WITH THE CRITERIA OF THE LANDSCAPE WATER CONSERVATION ORDINANCE AND GUIDELINES, AND HAVE APPLIED THEM FOR THE EFFICIENT USE OF WATER IN THE PLANTING DESIGN PLAN.

LANDSCAPE PLANTING OBSERVATION LOG		REVIEWED & ACCEPTED BY OWNER'S REP OR LAND ARCH		DATE
ITEM NO.	WORK ITEM DESCRIPTION	PRINT NAME	SIGNATURE	
PL-1	REPORT & PROTECTION OF EXISTING TREES			
PL-2	RIPPING OF PLANTING AREAS			
PL-3	SOIL CONDITIONING & TILLAGE DEPTH			
PL-4	IRRIGATION COVERAGE PRIOR TO PLANTING			
PL-5	FINISH GRADING PRIOR TO PLANTING			
PL-6	TREES - INITIAL QUALITY & LAYOUT			
PL-7	PLANTS - INITIAL QUALITY & LAYOUT			
PL-8	GRANULAR PRE-EMERGENT HERBICIDE IN MULCHED AREAS			
PL-9	WOOD MULCH DEPTH			

NOTES: THE ORIGINAL VERSION OF THIS LOG SHALL BE MAINTAINED ON THE AS-BUILT RECORD DRAWING SET.  
WORK ITEMS MAY NOT BE REVIEWED IF PRIOR WORK ITEMS HAVE NOT BEEN ACCEPTED.

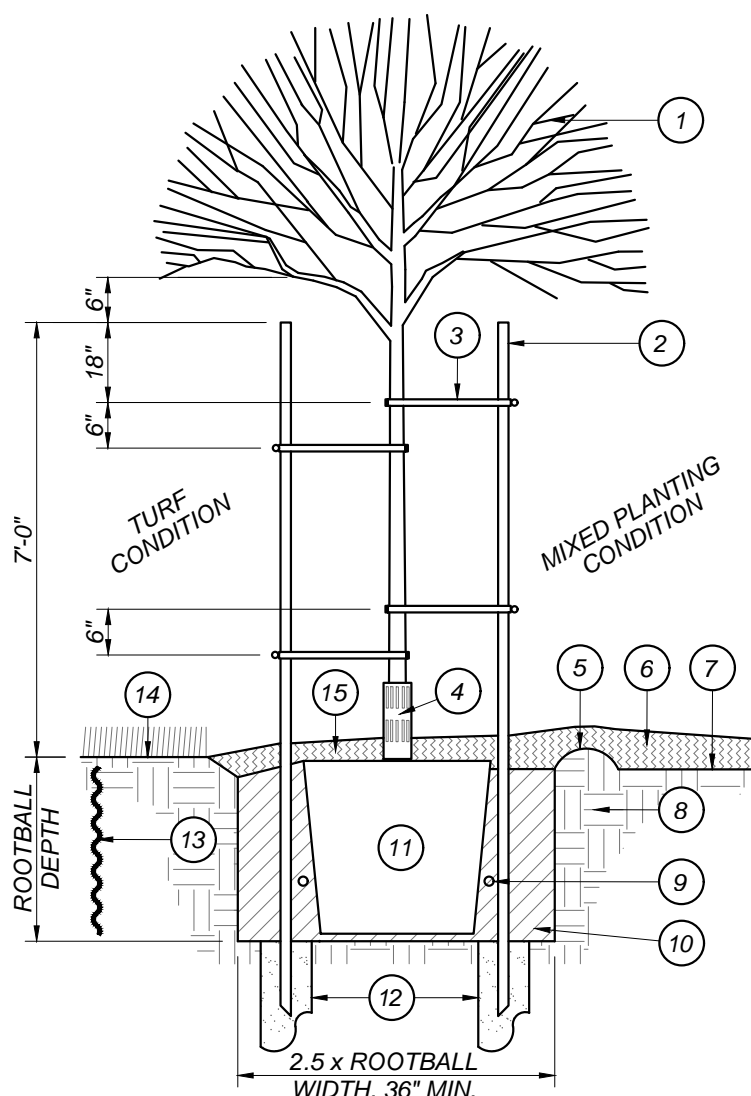


## L1.1

Drawing: P:\223-0165\Site\production\drawings\223165\_PL01.dwg; L1.1 - BCF.ctb  
Plot by: gpineda May 08, 2024 - 10:04am



# ADDENDUM - 3



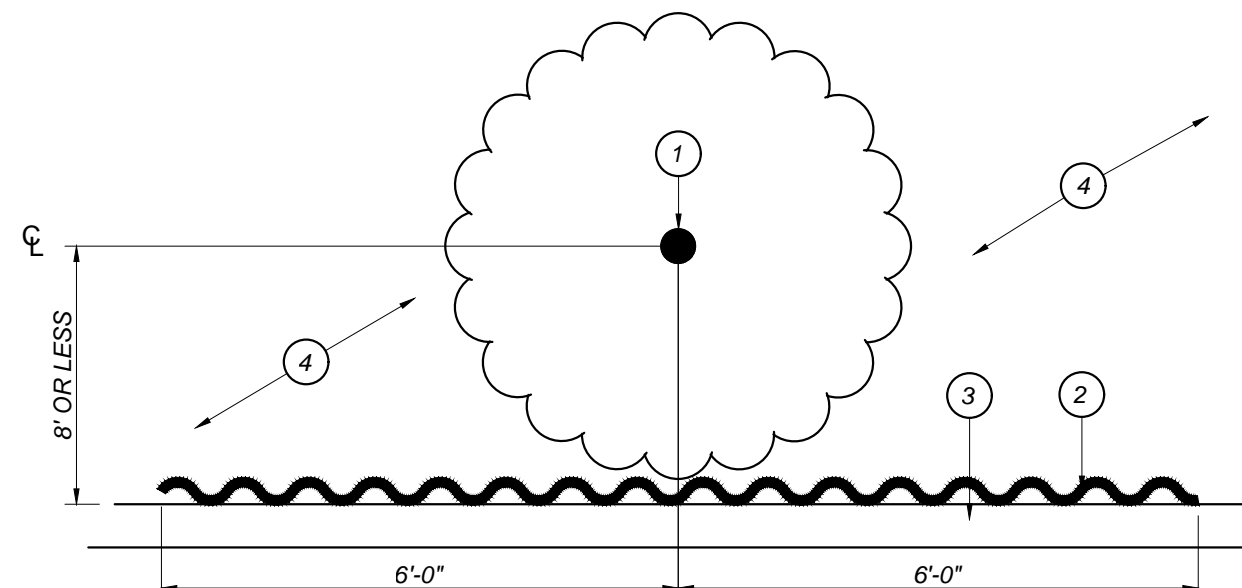
## DRAINAGE SUMP NOTES:

A. DRAINAGE SUMPS SHALL PENETRATE THROUGH AND BEYOND ANY UNDERLYING PAVEMENT OR HARDPAN SOIL STRATUM, AND SUCH PAVEMENT OR HARDPAN MATERIAL SHALL BE REMOVED FROM THE SUMP HOLES.

B. THE SUMP HOLE SHALL BE DRILLED TO MINIMUM DEPTH OF TEN (10) FEET, UNLESS VISUAL EVIDENCE OF A SUBSURFACE SAND AND/OR GRAVEL DRAINAGE STRATUM IS APPARENT AT A LESSER DEPTH. THE SUMP HOLES SHALL EXTEND INTO THE DRAINAGE STRATUM A MINIMUM OF ONE (1) FOOT.

## A DOUBLE STAKE TREE PLANTING

L1.2 NOT TO SCALE

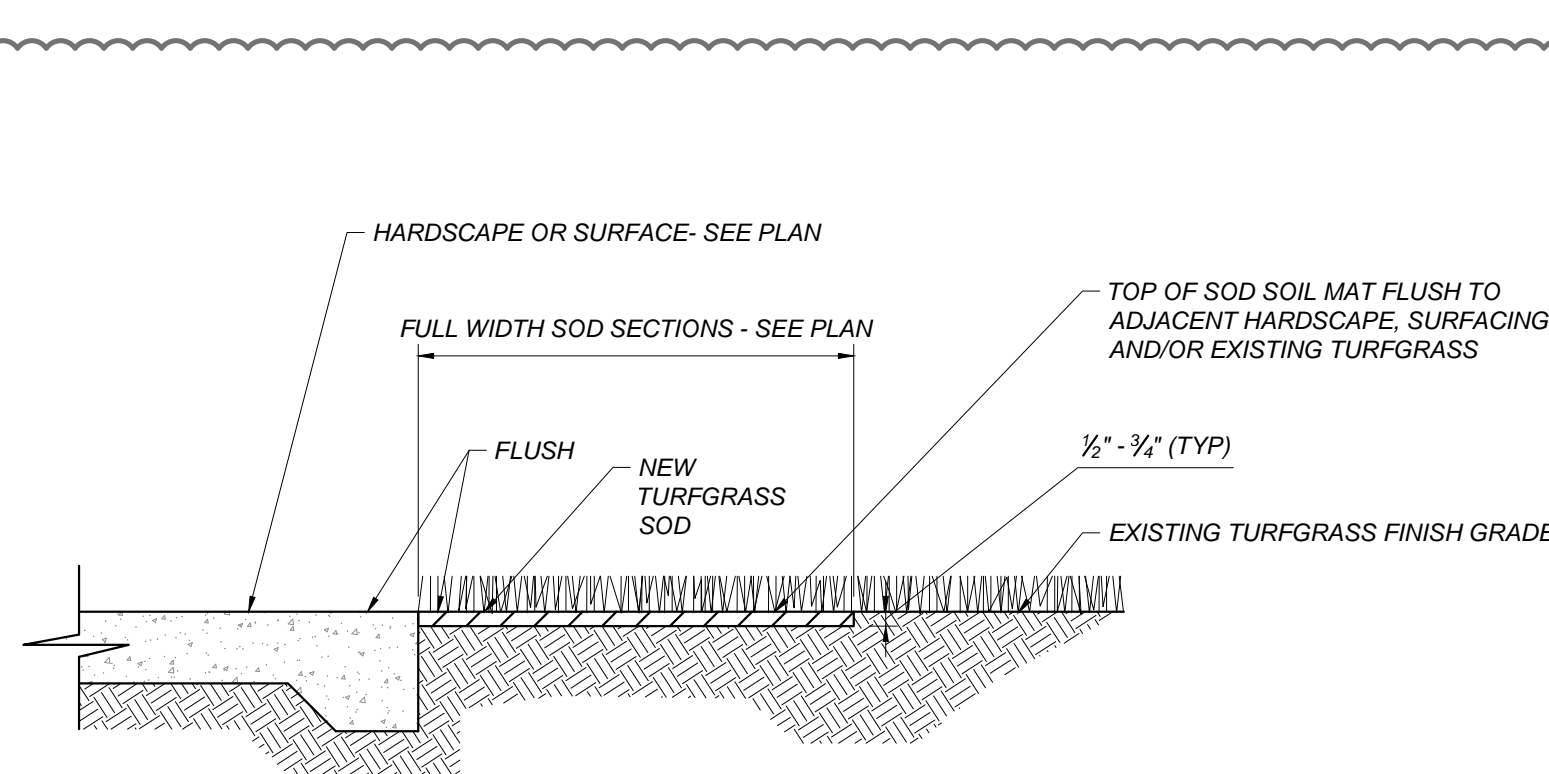


## LEGEND

1. TREE TRUNK.
2. 12 LF OF 24"-DEEP ROOT CONTROL BARRIER. DEEP ROOT UB24-2 OR EQUIVALENT. CENTER BARRIER ON TRUNK OF TREE. INSTALL PER MANUFACTURER'S SPECIFICATIONS.
3. HARDSCAPE ELEMENT: CURB, SIDEWALK, WALL, ETC.
4. PLANTING AREA.
5. INSTALL ROOT CONTROL BARRIER ON ALL SIDES OF THE PLANTING AREA WHEN SURROUNDED BY HARDSCAPE WITHIN 8' OF THE TREE TRUNK.

## C ROOT CONTROL BARRIER

L1.2 NOT TO SCALE

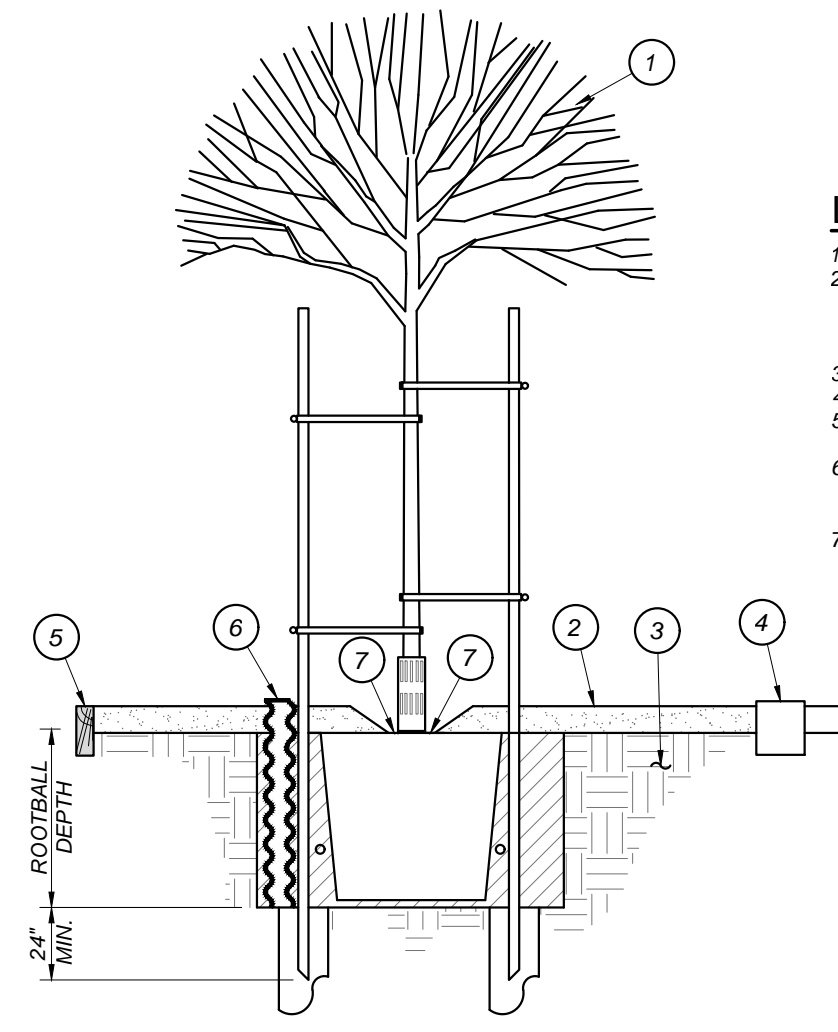


## NOTE:

IF THE EXISTING TURFGRASS FINISH GRADE IS HIGHER OR LOWER THAN THE NEW FINISH SURFACE, TRANSITION GRADE THE NEW SOD AT A MAXIMUM 1V:12H SLOPE

## F TURF SOD INSTALLATION

L1.2 NOT TO SCALE

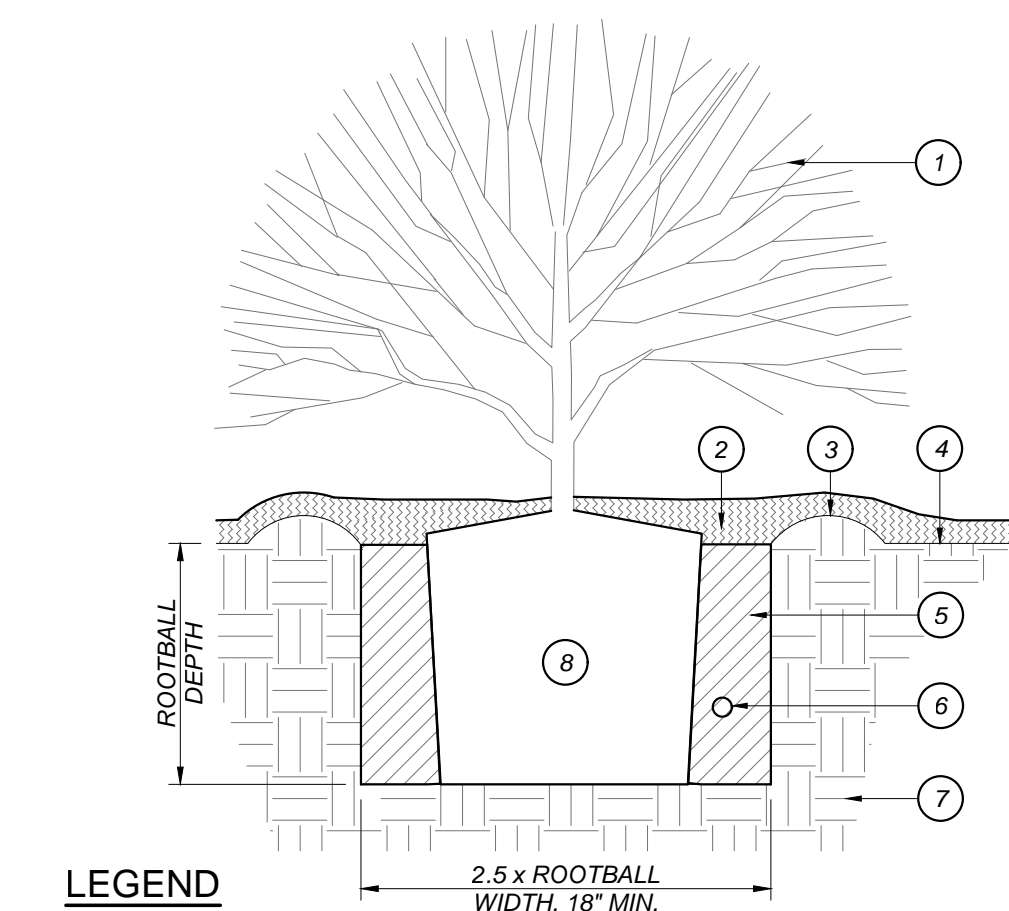


## LEGEND

1. SEE PER PLANTING DETAIL A.
2. STABILIZED DECOMPOSED GRANITE, MINIMUM 3" DEEP, COMPACT TO 90%. HOLD 1" BELOW HARDSCAPE OR HEADER.
3. SUBGRADE COMPACT TO 85% (MAX).
4. HARDSCAPE FEATURE. SEE SITE PLAN.
5. WOOD MULCH WHERE OCCURS. SEE SITE PLAN.
6. INSTALL GRATE AT TOP OF ROOT WATERING ASSEMBLY FLUSH TO TOP OF SURFACING. SEE IRRIGATION PLAN.
7. HOLD SURFACING 2" AWAY FROM TRUNK AND TRANSITION TO FULL DEPTH OVER 6".

## B DECOMPOSED GRANITE IN TREE WELL

L1.2 NOT TO SCALE

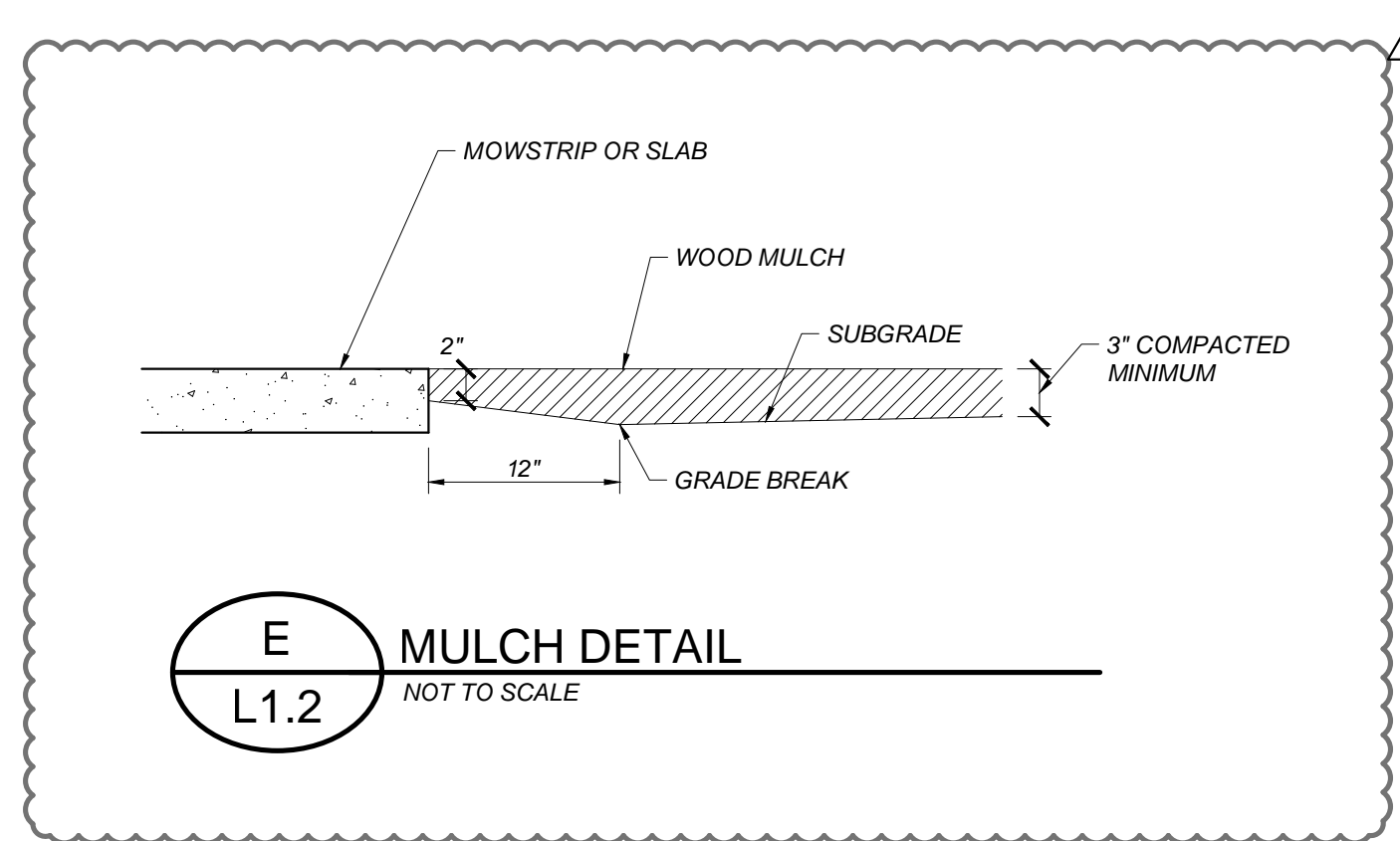


## LEGEND

1. SHRUB.
2. WOOD MULCH LAYER.
3. 3" HIGH WATERING BASIN.
4. FINISH GRADE.
5. AMENDED BACKFILL. SEE SPECIFICATIONS.
6. FERTILIZER PACKET. SEE SPECIFICATIONS.
7. SITE SOIL.
8. ROOTBALL. SET TOP OF ROOTBALL 1" ABOVE FINISH GRADE.

## D SHRUB PLANTING

L1.2 NOT TO SCALE



## E MULCH DETAIL

L1.2 NOT TO SCALE

## PLANTING NOTES:

1. IMMEDIATELY NOTIFY THE OWNER'S REPRESENTATIVE IF IT IS OBVIOUS THAT OBSTRUCTIONS OR STRUCTURES, IRRIGATION SYSTEM MALFUNCTION, EXISTING TREES OR PLANTS, GRADE DIFFERENCES OR CHANGES IN THE SITE PLAN ARE PRESENT THAT WILL IMPACT THE PLANTING DESIGN. FAILURE TO GIVE SUCH NOTIFICATION SHALL PLACE THE RESPONSIBILITY ON THE CONTRACTOR FOR ANY REVISIONS OR REPLACEMENTS NECESSARY FOR CORRECTION.
2. ANY EXISTING PLANTING SHOWN ON THE PLAN IS FOR REFERENCE ONLY. THE CONTRACTOR SHALL VERIFY THE EXISTING PLANTING AT THE SITE PRIOR TO STARTING WORK. UNLESS NOTED OTHERWISE, THE CONTRACTOR SHALL PROTECT THE EXISTING PLANTING ADJACENT TO THE WORK FROM DAMAGE OR DISTRESS.
3. ALL TREES AND SHRUBS SHALL BE OF CLASS A QUALITY WITHOUT PESTS, DISEASE OR DAMAGE. SHALL BE WELL ESTABLISHED IN THEIR CONTAINERS WITHOUT GIRDLING ROOTS OR EXCESSIVE TOP GROWTH, AND SHALL COMPLY WITH THE REQUIREMENTS OF THE 'AMERICAN STANDARDS FOR NURSERY STOCK' (ANSI Z60.1).
4. NOTIFY THE LANDSCAPE ARCHITECT PRIOR TO THE INSTALLATION OF IRRIGATION COMPONENTS AND TREE AND/OR SHRUB PLANTING FOR APPROVAL OF THE PLANT LAYOUT AND PLANT QUALITY. PLANT LOCATIONS SHALL AVOID CONFLICTS WITH EXISTING IMPROVEMENTS, PLANTINGS OR UTILITY POLES WHILE MEETING THE DESIGN INTENT. DO NOT PLANT TREES WITHIN 15 FEET OF LIGHT POLES UNLESS SPECIFICALLY AUTHORIZED. FAILURE TO OBTAIN SUCH APPROVAL SHALL PLACE THE RESPONSIBILITY ON THE CONTRACTOR FOR ANY RELOCATION OR REPLACEMENT OF IRRIGATION COMPONENTS, PLANTED TREES AND/OR SHRUBS.
5. PLANT QUANTITIES ARE PROVIDED FOR BIDDING CONVENIENCE ONLY. THE CONTRACTOR SHALL PROVIDE SUFFICIENT QUANTITIES OF PLANTS EQUAL TO THE SYMBOL COUNT OR TO FILL THE AREA SHOWN ON THE PLAN AT THE SPECIFIED TRIANGULAR SPACING.
6. WHERE GROUND COVER PLANTS ARE SHOWN AT A SPECIFIED SPACING, THE GROUND COVER PLANTING CONTINUES UNDERNEATH THE TALLER SHRUBS AND TREES AS SHOWN IN THE PLANTING DETAILS. DO NOT PLANT GROUND COVER IN SHRUB OR TREE WATERING BASINS.
7. ALL NEW TREES LOCATED WITHIN 8 FEET OF PAVEMENT OR STRUCTURES SHALL HAVE A ROOT CONTROL BARRIER INSTALLED WHEN APPLICABLE. UNLESS OTHERWISE SPECIFIED, INSTALL A 12 FOOT LONG X 24 INCH DEEP LINEAR POLYETHYLENE BARRIER VESPRO OR EQUAL AT THE EDGE OF PAVEMENT/STRUCTURE, CENTERED ON THE TREE TRUNK AS SHOWN IN THE PLANTING DETAILS.
8. REMOVE NURSERY STAKES FROM TREES AFTER TREE STAKING OR GUYING AS SHOWN IN THE DETAILS.
9. INSTALL PERFORATED POLYETHYLENE TREE TRUNK PROTECTORS FOR ALL NEW TREES PLANTED IN TURF. UNLESS NOTED OTHERWISE, MAINTAIN A MINIMUM 6 FOOT DIAMETER MULCHED AREA AT THE BASE OF THE TREE INSIDE THE WATERING BASIN.
10. THE CONTRACTOR SHALL PRUNE NEW TREES ONLY WHEN SPECIFICALLY DIRECTED BY THE LANDSCAPE ARCHITECT. TREES HEADED BACK WITHOUT INTACT SCAFFOLDING BRANCH STRUCTURE OR IN ROOT-BOUND CONTAINERS SHALL BE REJECTED.
11. SUBMIT REPRESENTATIVE SOIL SAMPLES OF NATIVE AND PROPOSED IMPORT, IF NEEDED, PLANTING TOPSOIL TO A SOIL LAB FOR HORTICULTURAL ANALYSES AND FERTILITY RECOMMENDATIONS. AMEND SOIL ACCORDING TO THE RECOMMENDATIONS OF THE SOILS REPORT AND LANDSCAPE ARCHITECT'S DIRECTION. SEE THE LANDSCAPE PLANTING SPECIFICATIONS FOR ADDITIONAL INSTRUCTIONS.
12. PROVIDE SANDY LOAM TOPSOIL PER SPECIFICATION IN ALL RAISED PLANTERS AND WHERE IMPORT TOPSOIL IS REQUIRED. NATIVE SITE SOIL MAY BE USED IN RAISED PLANTERS ONLY WHEN THE NATIVE SITE SOIL MEETS THE CRITERIA FOR SANDY LOAM TOPSOIL AS DETERMINED BY A SOIL ANALYSIS.
13. PRIOR TO SOIL CONDITIONING, RIP IN TWO DIFFERENT DIRECTIONS WITH TINES AT 12 INCH SPACING, ALL TURFGRASS AREAS TO A 12 INCH DEPTH, AND SHRUBS/GROUND COVER AREAS TO A 18 INCH DEPTH. ROUGH GRADE AND TILL THE APPROVED SOIL CONDITIONERS AND FERTILIZERS INTO THE TOP 6 INCHES PER THE LANDSCAPE PLANTING SPECIFICATIONS. COMPOST RATE SHALL BE A MINIMUM OF FOUR (4) CUBIC YARDS PER 1,000 SQUARE FEET.
14. UPON THE COMPLETION OF THE SOIL CONDITIONING, REMOVE ROCKS AND CLODS 1 INCH DIAMETER AND GREATER FROM THE TOP TWO INCHES OF TOPSOIL, AND ALL DEBRIS. FINISH GRADE THE AREA TO +/- 0.04 FOOT TOLERANCE. FINISH GRADE IN MULCHED AREAS SHALL BE STRAIGHTENED WITHOUT HUMPS OR DEPRESSIONS AND SHALL BE 2 INCHES BELOW ADJACENT HARDSCAPE, INLETS OR UTILITY BOX COLLARS. RELATIVE DENSITY OF THE TOPSOIL SHALL NOT EXCEED 85% COMPACTION.
15. OBTAIN THE APPROVAL OF THE OWNER'S REPRESENTATIVE TO BEGIN PLANTING OPERATIONS ONCE THE IRRIGATION SYSTEM IS OPERATIONAL AND THE SOIL CONDITIONING AND FINISH GRADING IS COMPLETED.
16. AFTER PLANTING IS COMPLETED AND JUST PRIOR TO MULCH INSTALLATION, APPLY A BROAD SPECTRUM PRE-EMERGENT HERBICIDE TO ALL NON-TURFGRASS PLANTING AREAS PER THE MANUFACTURER'S SPECIFICATIONS.
17. WHERE MULCH IS TO BE INSTALLED IN AN EXISTING PLANTING AREA, BREAKUP/TILL THE EXISTING SOIL TO A MINIMUM 6 INCH DEPTH PER SPECS, AND ADJUST FINISH GRADE ADJACENT TO HARDSCAPE AND DRAINAGE ELEMENTS TO PROVIDE A 2 INCH DEPTH THAT TRANSITIONS TO THE EXISTING GRADE OVER 1 TO 2 FEET.
18. INSTALL A MINIMUM 3 INCH DEPTH OF CHIPPED WALK-ON WOOD MULCH IN ALL PLANTING AREAS AND TREE WATERING BASINS EXCEPT FOR TURFGRASS AREAS, SLOPES 3:1 V OR GREATER, AREAS TO RECEIVE SEED PLANTING, OR AS NOTED ON THE PLAN. AREAS PLANTED WITH PLANTS SHALL HAVE A MINIMUM MULCH DEPTH OF 2 INCHES. INSTALL A MINIMUM 3 FOOT RADIUS OF 3 INCH DEEP WOOD MULCH AT THE BASE OF ALL TREES IN NEW TURFGRASS AREAS.
19. ALL EXISTING PLANTS AND/OR TURFGRASS SHOWN TO REMAIN AND DAMAGED OR REMOVED BY CONSTRUCTION OPERATIONS AND/OR UTILITY/IRRIGATION/DRAINAGE LINES SHALL BE REPLACED WITH PLANTS THAT MATCH AS CLOSELY AS POSSIBLE TO THE EXISTING PLANT SPECIES, VARIETY AND SIZE. THE REPLACEMENT TURFGRASS SOD VARIETY SHALL BE THE SAME AS SHOWN IN THE PLANTING LEGEND AS IF FOR NEW WORK, OR SHALL MATCH THE EXISTING TURFGRASS VARIETY WHERE EXISTING. TILL SOIL, CONDITIONING MATERIALS INTO THE TOP 6 INCHES OF THE SOIL, OVER THE AREA OF REPAIR/REPLACEMENT AS IF FOR NEW WORK. ADJUST FINISH GRADE SO NEW TURFGRASS SOD ABUTS FLUSH TO EXISTING SOD GRADE. THE REPLACEMENT PLANTS AND/OR TURFGRASS SOD SHALL BE MAINTAINED AS PART OF THE ORIGINAL SCOPE OF WORK. THE REPAIR OR REPLACEMENT WORK SHALL BE AT THE CONTRACTOR'S SOLE EXPENSE.
20. CONTRACTOR SHALL MAINTAIN THE NEW PLANTING FOR HEALTHY AND VIGOROUS GROWTH, WHICH INCLUDES BUT IS NOT LIMITED TO WATERING, WEEDING, FERTILIZING, MOVING AND EDGING (AT LEAST ONCE A WEEK), REMOVING TRASH AND DEBRIS, AND OTHER RELATED ACTIVITIES THROUGHOUT THE DURATION OF THE MAINTENANCE PERIOD UNTIL FINAL ACCEPTANCE.

## CONTRACTOR SPECIAL PLANTING NOTES:

1. AN ASSESSMENT AND VALUATION OF ONSITE EXISTING TREES SCHEDULED TO REMAIN IN THE AREA OF WORK SHALL BE PERFORMED BY THE CONTRACTOR'S ARBORIST PRIOR TO THE START OF CONSTRUCTION OPERATIONS PER THE 'EXISTING LANDSCAPE PROTECTION' SPECIFICATION.
2. THE CONTRACTOR SHALL RIP, CONDITION AND TILL THE ENTIRE EXTENT OF ALL PLANTING AREAS RECEIVING NEW PLANTS PER THE PLANTING NOTES AND 'LANDSCAPE PLANTING' SPECIFICATIONS.
3. ALL EXISTING MIXED PLANTING AREAS RECEIVING NEW WOOD MULCH SHALL BE MANUALLY TILLED TO A MINIMUM DEPTH OF 4 INCHES, CLODS BROKEN UP TO A MAXIMUM 1 INCH DIAMETER. FINISH GRADED TO 2 INCHES BELOW ADJACENT SURFACES AND UTILITY/IRRIGATION BOXES WITHIN 12 INCHES OF THE HARDSCAPE EDGE, AND A PRE-EMERGENT HERBICIDE APPLIED PRIOR TO WOOD MULCH INSTALLATION. PROTECT EXISTING PLANTING DURING WOOD MULCH PREPARATION AND INSTALLATION.
4. THE ORIGINAL PLANTING OBSERVATION LOG SHALL BE MAINTAINED ON THE AS-BUILT RECORD DRAWING SET.
5. THE AS-BUILT RECORD DRAWING SET AND MAINTENANCE MANUAL SHALL BE SUBMITTED AND ACCEPTED PRIOR TO THE SCHEDULING OF A FINAL ACCEPTANCE REVIEW.



Know what's below.  
Call before you dig.



ARCHITECT  
FRESNO  
7790 North Palm Avenue  
Fresno, CA 93711  
559-448-8400 P  
559-445-8467 F  
PBK.com



LINCOLN ELEMENTARY SCHOOL

650 LIBERTY LANE, MADEIRA, CA 95037  
CONSTRUCTION DOCUMENTS

PROFESSIONAL SEAL



PROJECT NUMBER

220486

DATE

5/2/24

DSA APPLICATION NO.

02-121587

FILE NO.

20-30

PTN NO.

65243-141

DRAWN BY

KC

REVISIONS

#	DESCRIPTION	DATE
1	ADDENDUM 3	5/8/2024
2		
3		
4		
5		
6		
7		
8		
9		
10		
11		
12		
13		
14		
15		
16		
17		
18		
19		
20		
21		
22		
23		
24		
25		
26		
27		
28		
29		
30		

CONSTRUCTION DOCUMENTS

PLANTING  
DETAILS

L1.2



ADDENDUM - 3



ARCHITECT

PBK Architects, Inc.

FRESNO

7790 North Palm Avenue

Fresno, CA 93711

559-449-8400 P

559-449-8407 F

PBK.com

Blair Church & Flynn

CONSULTING ENGINEERS

LINCOLN ELEMENTARY SCHOOL

650 LIBERTY LANE, MADERA, CA 93637

CONSTRUCTION DOCUMENTS



PROJECT NUMBER		
220486		
DATE		
5/2/24		
DSA APPLICATION NO.		
02-121587		
FILE NO.		
20-30		
PTN NO.		
65243-141		
DRAWN BY		
KC		
REVISIONS		
#	DESCRIPTION	DATE
1	ADDENDUM 3	5/8/2024

CONSTRUCTION DOCUMENTS

IRRIGATION PLAN

IR1.1

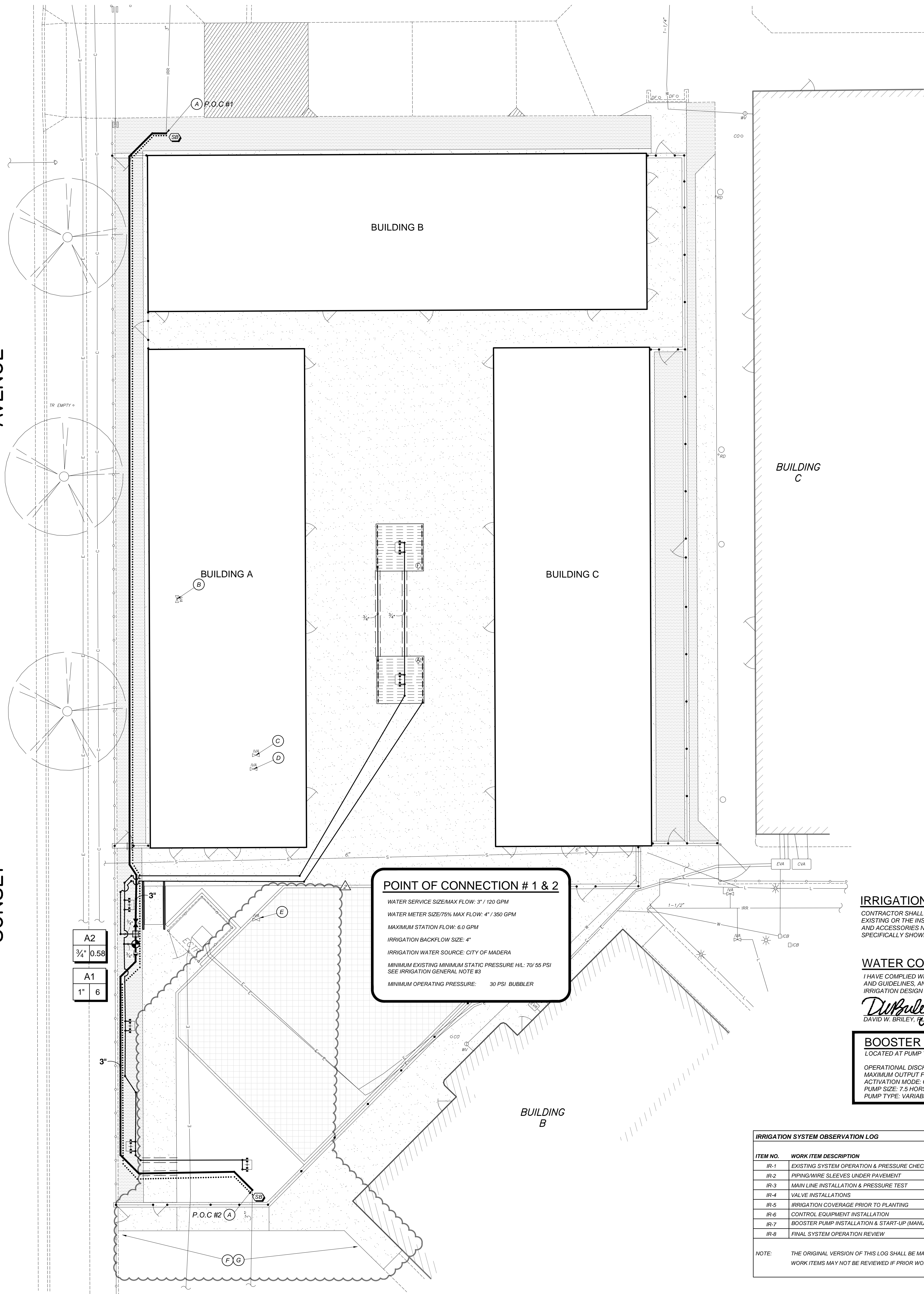
IRRIGATION LEGEND

SYMBOL	MANUFACTURER/MODEL/DESCRIPTION	ARC	PSI	GPM	RADIUS	DETAIL
••	TREE BUBBLER 50 HUNTER PROS-PRS30-04-CV-PCN-50	360	30	0.5	3'	K/IR1.2
SYMBOL	MANUFACTURER/MODEL/DESCRIPTION					
⊞	DRIP CONTROL KIT 3/4" HUNTER ICZ-101-25-LF					
⊞	FLUSH VALVE ASSEMBLY					D/IR1.3
⊞	AIR/VACUUM RELIEF VALVE HUNTER AVR-075. INSTALL AT HIGHEST TUBING ELEVATION IN EACH DRIP ZONE. INSTALL IN A ROUND GREEN VALVE BOX					E/IR1.3
⊞	DRIP SYSTEM OPERATION INDICATOR HUNTER ECO-ID					F/IR1.3
⊞	AREA TO RECEIVE DRIP LINE HUNTER HDL-06-18-COP PRESSURE COMPENSATING LANDSCAPE DRIP LINE WITH CHECK VALVE, 0.6 GPH EMITTERS AT 18" O.C. DRIP LINE LATERALS SPACED AT 18" APART, WITH EMITTERS OFFSET FOR TRIANGULAR PATTERN, MINIMUM 3" COVER					B/IR1.3
SYMBOL	MANUFACTURER/MODEL/DESCRIPTION					DETAIL
⊞	REMOTE CONTROL VALVE HUNTER ICZ-101G					F/IR1.2
⊞	QUICK COUPLER VALVE HUNTER-44RC WITH HK44 KEY AND HS2 HOSE SWIVEL					J/IR1.2
⊞	GATE VALVE SMALL MBCO T-1134, OR EQUAL (SMALL PIPE SIZE)					G/IR1.2
⊞	EXISTING CONTROLLER - CA HUNTER ICC2 (32 STATIONS/ 18 USED/ 18 SPARE WIRES) - FIELD, LOCATED AT PUMP YARD.					
⊞	EXISTING CONTROLLER - CB HUNTER I-CORE (42 STATIONS/ 21 USED/ 21 SPARE WIRES), LOCATED AT PUMP YARD.					
⊞	EXISTING BOOSTER PUMP					
⊞	SPLICE BOX					I/IR1.2
---	IRRIGATION LATERAL LINE: PVC SCHEDULE 40 SOLVENT WELD, SIZE AS NOTED					C/IR1.2
---	IRRIGATION MAINLINE: PVC SCHEDULE 40 SOLVENT WELD, SIZE AS NOTED					A/IR1.2
---	PIPE SLEEVE: PVC SCHEDULE 40 TWICE PIPE SIZE					E/IR1.2
⊞	VALVE NUMBER					
⊞	VALVE FLOW (GPM)					
⊞	VALVE SIZE					
.....	CONTROL WIRE PLUS ONE (1) COMMON WIRE					D/IR1.2
---	EXISTING LATERAL LINE					
---	EXISTING MAIN LINE					
⊞	EXISTING ROTOR					
+	PROPOSED TREE, SEE PLANTING PLAN ON SHEET L201 FOR VARIETY AND SIZE					
⊞	RE-ROUTE MAIN LINE AND RECONNECT NEW MAIN LINE TO EXISTING MAIN LINE.					
⊞	REMOVE EXISTING IRRIGATION VALVE XB-6/ 1 1/2". RETURN TO OWNER. USE CONTROLLER STATION FOR NEW IRRIGATION VALVE.					
⊞	REMOVE EXISTING IRRIGATION VALVE XA-14/ 1 1/2". RETURN TO OWNER. USE CONTROLLER STATION FOR NEW IRRIGATION VALVE.					
⊞	REMOVE EXISTING IRRIGATION VALVE XA-19/ 1". RETURN TO OWNER.					
⊞	REMOVE EXISTING IRRIGATION VALVE XB-3 1". RETURN TO OWNER.					
⊞	PROTECT HEADS FOR NEW HARDSCAPE. ADJUST HEADS/NOZZLES FOR NEW IMPROVEMENTS. SEE GENERAL IRRIGATION NOTE #17					
⊞	CHANGE SPRINKLER HEAD ARC TO MINIMIZE OVERSPRAY ONTO HARDSCAPE					

Drawing: P:\223-0165\Submittals\production\mwp\223165\_IR01.dwg, IR1.1 - BCF.cdb  
Plot by: garibola May 08, 2024 - 10:35am

AVENUE

SUNSET



IRRIGATION SYSTEM BID ALLOWANCE:

CONTRACTOR SHALL INCLUDE A BID ALLOWANCE IN THE AMOUNT OF \$1,000 FOR THE REPLACEMENT OF EXISTING OR THE INSTALLATION OF NEW SPRINKLER HEADS, VALVES, PIPING AND OTHER EQUIPMENT AND ACCESSORIES NECESSARY FOR THE PROPER OPERATION OF THE EXISTING SYSTEM WHERE NOT SPECIFICALLY SHOWN ON THE DRAWINGS FOR REPLACEMENT OR NEW INSTALLATION.

WATER CONSERVATION COMPLIANCE STATEMENT:

I HAVE COMPLIED WITH THE CRITERIA OF THE LANDSCAPE WATER CONSERVATION ORDINANCE AND GUIDELINES, AND HAVE APPLIED THEM FOR THE EFFICIENT USE OF WATER IN THE IRRIGATION DESIGN PLAN.

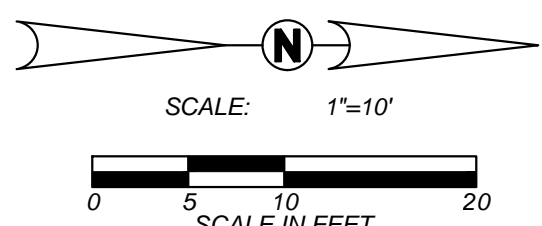
David W. Briley  
DAVID W. BRILEY, P.E. 21787

BOOSTER PUMP PARAMETERS

LOCATED AT PUMP YARD  
OPERATIONAL DISCHARGE PRESSURE: 65 PSI  
MAXIMUM OUTPUT FLOW: CONTRACTOR SHALL VERIFY OUTPUT FLOW  
ACTIVATION MODE: CONTROLLER PROGRAM WITH PUMP START RELAY  
PUMP SIZE: 7.5 HORSEPOWER  
PUMP TYPE: VARIABLE FREQUENCY DRIVE

IRRIGATION SYSTEM OBSERVATION LOG			
ITEM NO.	WORK ITEM DESCRIPTION	REVIEWED & ACCEPTED BY OWNER'S REP OR LAND ARCH	
		PRINT NAME	SIGNATURE
IR-1	EXISTING SYSTEM OPERATION & PRESSURE CHECK		
IR-2	PIPING/WIRE SLEEVES UNDER PAVEMENT		
IR-3	MAIN LINE INSTALLATION & PRESSURE TEST		
IR-4	VALVE INSTALLATIONS		
IR-5	IRRIGATION COVERAGE PRIOR TO PLANTING		
IR-6	CONTROL EQUIPMENT INSTALLATION	N/A	N/A
IR-7	BOOSTER PUMP INSTALLATION & START-UP (MANUF.)	N/A	N/A
IR-8	FINAL SYSTEM OPERATION REVIEW		
NOTE: THE ORIGINAL VERSION OF THIS LOG SHALL BE MAINTAINED ON THE AS-BUILT RECORD DRAWING SET. WORK ITEMS MAY NOT BE REVIEWED IF PRIOR WORK ITEMS HAVE NOT BEEN ACCEPTED.			

SEE SHEET IR1.2 AND IR1.3  
FOR IRRIGATION NOTES  
AND DETAILS



Know what's below.  
Call before you dig.